

# FLOW SIGHTS

## F250 SERIES

Inline double window flow sights can be used to determine flow, clarity of fluid and impurities in either horizontal or vertical pipe runs. Nylon ball flow indicator gives positive flow indication with dark or opaque fluids.

### Standard Materials:

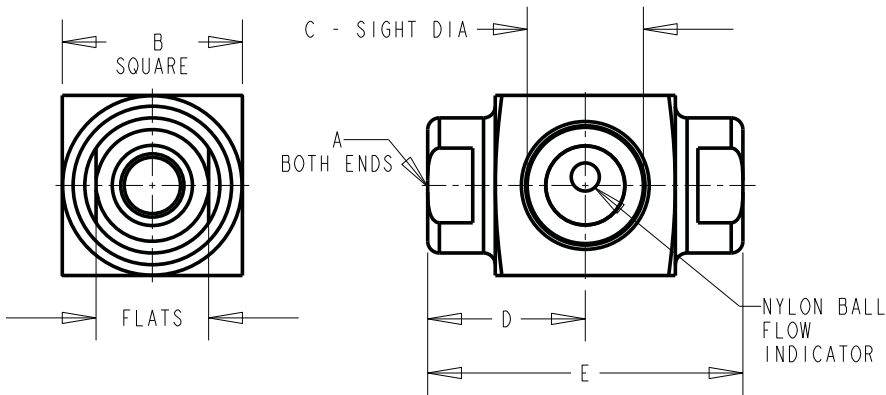
- Brass body
- Tempered borosilicate sight window
- Buna N seals

### Temperature Ratings:

- Maximum working temperature up to 180°F (82°C)
- For applications requiring maximum working temperature over 180°F (82°C), please consult factory

### Caution:

Scratched glass significantly reduces pressure rating.



F250 Series							
Part No.		A	B	C	D	E	Max. Working Pressure @ 150°F (65°C) PSI (kPa)
No Ball	Ball	Female NPTF	inches (mm)	inches (mm)	inches (mm)	inches (mm)	
—	F251-04-01	1/2-14	2.00 (50.80)	.88 (23.35)	1.75 (44.45)	3.50 (88.90)	400 (2758)
—	F251-05-01	3/4-14	2.25 (57.15)	.88 (23.35)	1.75 (44.45)	3.50 (88.90)	400 (2758)
—	F251-06-01	1-11 1/2	2.50 (63.50)	1.38 (35.05)	2.31 (58.67)	4.62 (117.35)	160 (1103)
F251-08	—	1 1/2-11 1/2	3.00 (76.20)	1.88 (47.75)	2.88 (73.15)	5.75 (146.05)	85 (586)

**MODIFICATIONS AVAILABLE MADE TO ORDER - CONSULT OUR FACTORY  
(MINIMUM ORDER MAY BE REQUIRED)**

Dimensions and specifications are subject to change without notice. Not all items are Made-To-Stock, contact us for availability.

02/14

Ph : 920-682-6877  
Fx : 920-684-7210



sales@ldi-industries.com  
www.ldi-industries.com