

METERING & SHUT OFF VALVES

N470 SERIES

The N470 Series toggle type valves are designed for controlled flow applications that require shutting off at times. This style of valve can be shut off and turned on again without affecting the previous preset drip rate. Fine adjustments can be made and easily locked by the knurled friction lock-ring. The drip rate is clearly visible through the large sight. Gravity feed valves are furnished with a vented sight chamber, provided by a split in the gasket above the sight glass. Valves for pressure applications have a solid gasket in both ends of the sight glass. (Non-vented)

Standard Materials:

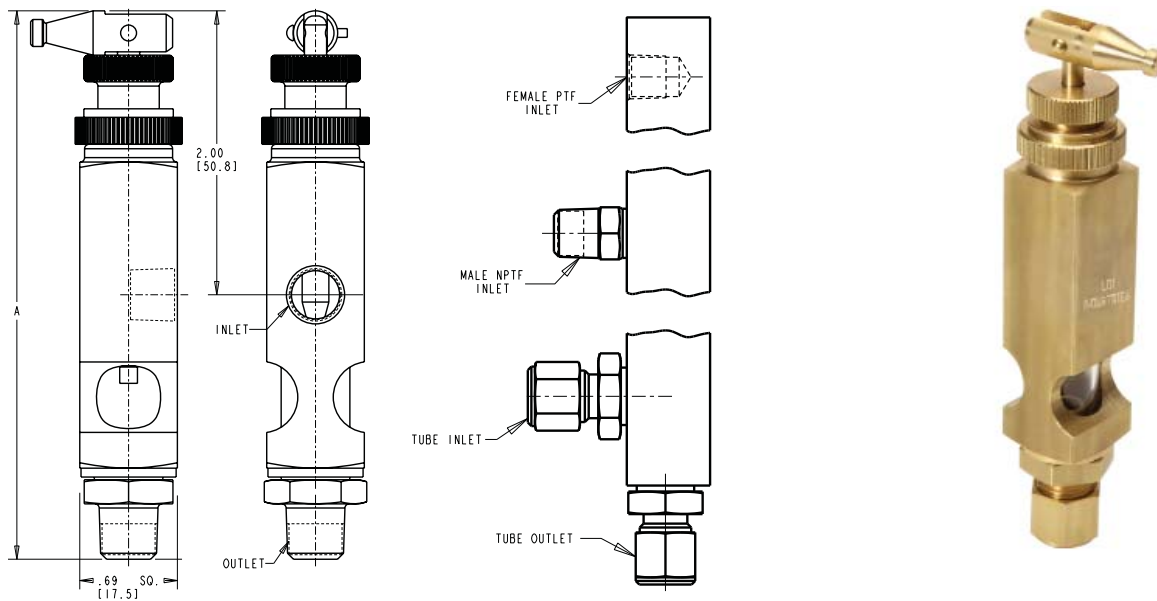
- Brass Construction
- Buna N Seals
- Pipe threads are dryseal

Pressure Ratings:

- Pressure version is rated for maximum working pressure applications up to 125 PSI (862 kPa)
- .09 (2.39mm) minimum orifice

NOTE:

- Please refer to Appendix LE-3 on page LE-A3 for Toggle Valve Adjustment Instructions



NOTE: All dimensions are inches [mm]

N470 Series - Angle Pattern			
Part No.		A inches (mm)	
Gravity	Pressure	Outlet	
1/8 PTF Female Inlet			
N471-02	—	1/8 Male	3.81 (96.77)
N471-03	—	1/4 Tube	4.00 (101.60)
1/8 NPTF Male Inlet			
N472-03	N472-13	1/4 Tube	4.00 (101.60)
1/4 NPTF Male Inlet			
N473-03	—	1/4 Tube	4.00 (101.60)

Dimensions and specifications are subject to change without notice. Not all items are Made-To-Stock, contact us for availability.

02/14

Ph : 920-682-6877
Fx : 920-684-7210



sales@ldi-industries.com
www.ldi-industries.com