

APPENDIX RA-2

FRONT MOUNT GAGE INSTALLATION INSTRUCTIONS

- At the desired gage location: **FIG. A, B, C**
 - Locate centers
 - For thin wall tank, drill two .52 inch (13.10mm) diameter holes in tank wall corresponding to centers of gage
- OR -
 - If preferred, where tank wall is heavy enough to tap:
 Drill and tap two holes per your selected mounting bolt thread (ie. 1/2-20UNF, or M12x1.75, etc.) in tank wall corresponding to centers of gage
- Remove burrs from holes to provide good sealing surfaces **FIG. A, B, C**
- Install gage to tank - make sure O-rings are set properly in recess provided, either in gage body or in sealing spacer sleeve, (outside of tank wall between gage and tank) **FIG. E**
- Tighten through bolt with a socket wrench. Torque mounting bolt to 60 in-lbs (6.78N-m). It is not necessary to over compress seals to make a liquid tight seal **FIG. E**.
- Gages 3.00 inches through 12.00 inches (76.20mm through 304.80mm) centers inclusive have tank seals recessed into the gage body - Gages 13.00 inches through 72.00 inches (330.20 mm through 1828.80 mm) centers inclusive are furnished with sealing spacer sleeves.* **FIG. E**.
- For gages with centers of 48.00 inches (1219.20mm) or more, center mounting kit brackets are furnished. To install the center mounting kit bracket, tack weld two 1/4-20 full nuts to the tank wall as shown below **FIG. D**.

FIG. A

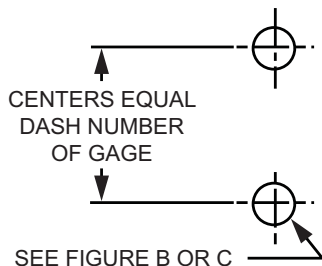


FIG. D

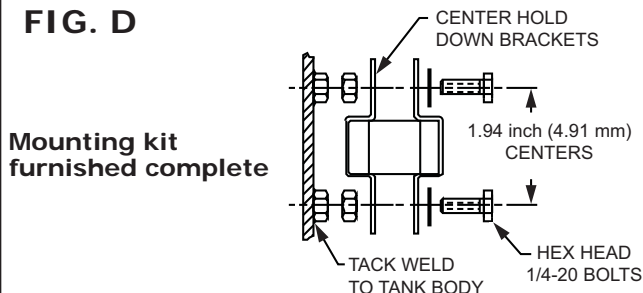
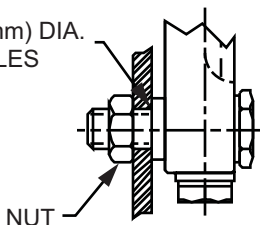


FIG. B

.52 INCH (13.10 mm) DIA. DRILLED HOLES



Thin wall tank with access to inside to install (2) nuts

FIG. E

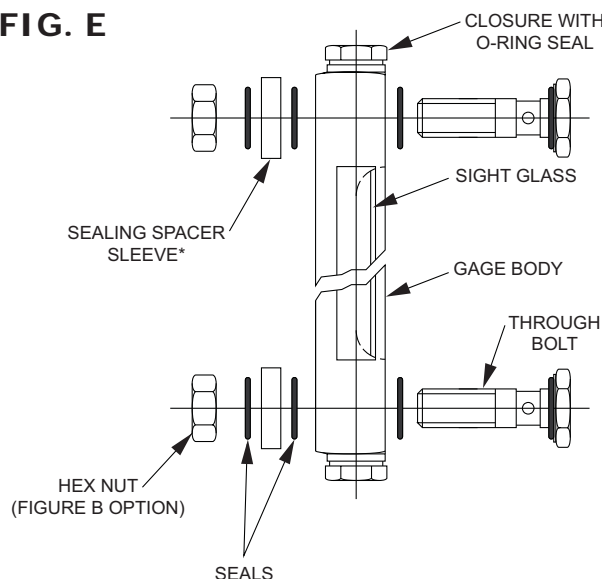
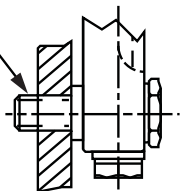


FIG. C

1/2-20 UNF TAP



Dimensions and specifications are subject to change without notice. Not all items are Made-To-Stock, contact us for availability.

ES327-50
02/14

Ph : 920-682-6877
Fx : 920-684-7210

LDI Industries

sales@ldi-industries.com
www.ldi-industries.com