

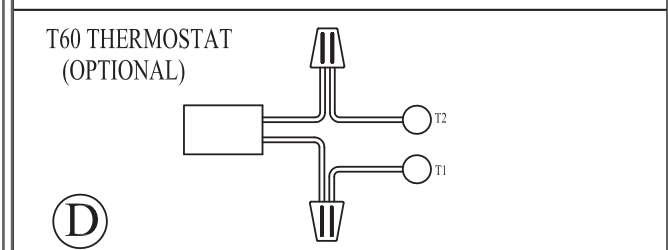
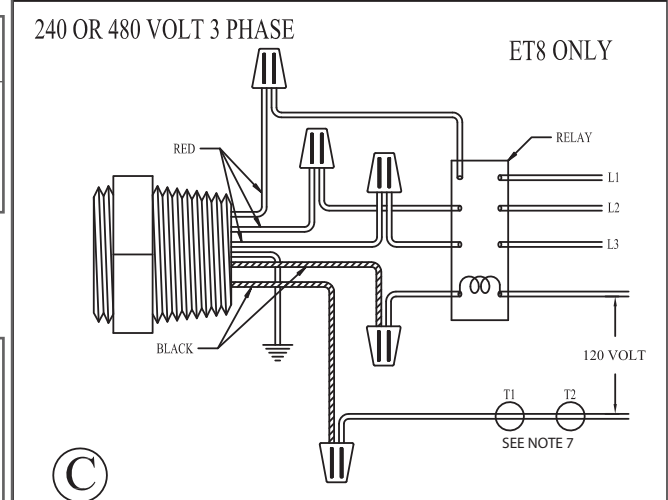
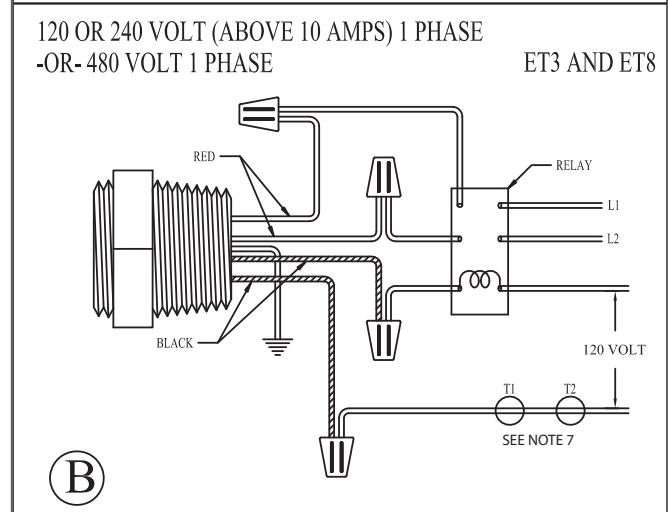
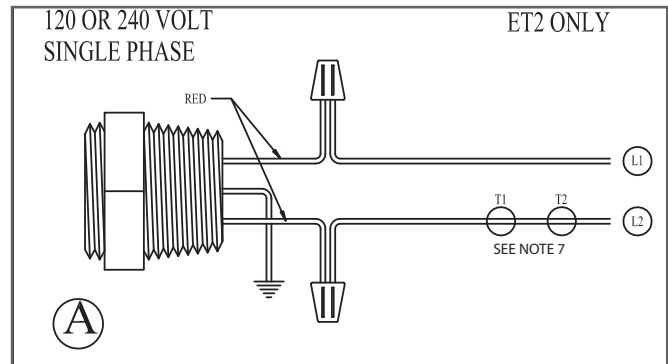
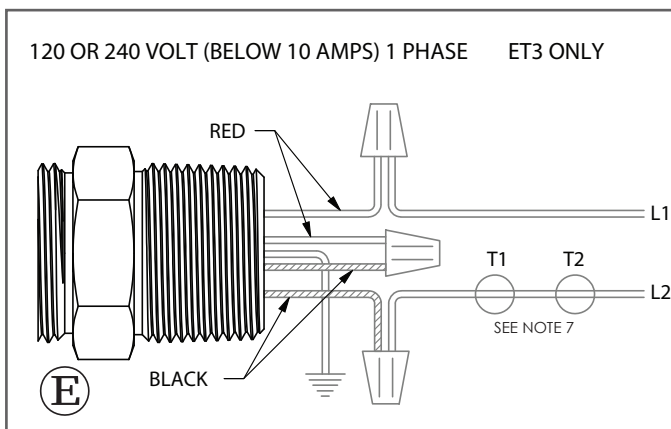
APPENDIX RA-13

IMMERSION HEATER INSTALL AND WIRING INSTRUCTIONS

1. On ET2 models only, install into a 3/4 inch NPT coupling using a reducer bushing supplied; or for existing/replacement applications the 1/2 inch NPT connection in the reservoir requires a 23/32 inch drill opening.
2. Must be immersed at all times
3. Mount horizontally only
4. Operate on a rated voltage - heaters are not dual voltage
5. Use on AC only
6. Lead wires are color coded - heater leads are red, thermostat leads are black. The ET2 Series heaters have the thermostat wired internally and no black leads are present.
7. T-60 ambient air thermostat (optional) set to close at 40° F. To be wired into circuit at points T1 and T2 see diagram D.
8. Above 10 AMP draw or 480V or 3 phase, use relay - see diagram B or C
9. To calculate amperage draw:

SINGLE PHASE	THREE PHASE
$AMPS = \frac{WATTAGE}{VOLTS}$	$AMPS = \frac{WATTAGE}{VOLTS \times 1.73}$

10. Below 10 AMP draw 1 phase, no relay - see diagram E



Dimensions and specifications are subject to change without notice. Not all items are Made-To-Stock, contact us for availability.

03/23

Ph : 920-682-6877
Fx : 920-684-7210

LDI Industries

sales@ldi-industries.com
www.ldi-industries.com