

COUPLING & FLANGE CONNECTIONS

4 BOLT FLANGE - THREADED x O-RING FACE

The 4 Bolt Flange is a known leak-free connection. It is specifically designed for use in high pressures, larger pipes and tight quarters applications. They are commonly used to connect larger sized hose and tubing in fluid power systems.

Standard Materials:

- Carbon Steel

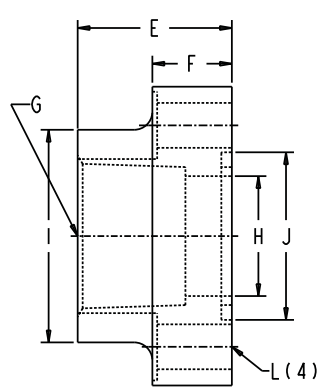
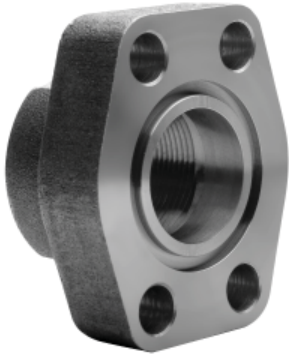


Figure 1

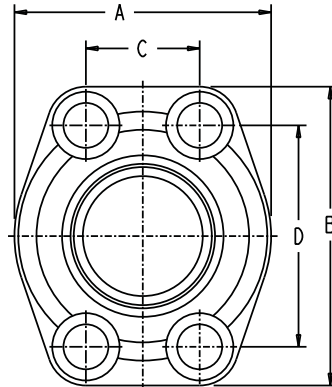


Figure 2

Refer to page 27 for metric mounting options

Code 61 - 3000 PSI NPTF Thread

O-Ring Part No. Fig 1	Flat Face Part No. Fig 2	inches											Mounting Hardware			
		G Port Size (NPTF)	Pad Size	A	B	C	D	E	F	H	I	J	L Drill Dia	K Tap	O-Ring	SHCS
W43-8-8-U	W104-8-8	1/2	.50	1.81	2.13	.688	1.500	1.42	.63	.50	1.25	1.000	.344	5/16-18	210	5/16-18x1.25
W43-12-12-U	W104-12-12	3/4	.75	1.97	2.56	.875	1.875	1.42	.71	.75	1.54	1.250	.406	3/8-16	214	3/8-16x1.50
W43-16-16-U	W104-16-16	1	1.00	2.17	2.75	1.031	2.062	1.50	.71	1.00	1.81	1.560	.406	3/8-16	219	3/8-16x1.50
W43-20-20-U	W104-20-20	1 1/4	1.25	2.68	3.12	1.188	2.312	1.61	.83	1.25	2.22	1.750	.469	7/16-14	222	7/16-14x1.75
W43-24-24-U	W104-24-24	1 1/2	1.50	3.07	3.66	1.406	2.750	1.77	.98	1.50	2.50	2.115	.531	1/2-13	225	1/2-13x1.75
W43-32-32-U	W104-32-32	2	2.00	3.54	4.00	1.688	3.062	1.77	.98	2.00	3.12	2.490	.531	1/2-13	228	1/2-13x1.75
W43-40-40-U	W104-40-40	2 1/2	2.50	4.09	4.49	2.000	3.500	1.97	.98	2.50	3.62	2.995	.531	1/2-13	232	1/2-13x1.75
W43-48-48-U	W104-48-48	3	3.00	4.88	5.28	2.438	4.188	1.97	1.06	3.00	4.47	3.615	.656	5/8-11	237	5/8-11x2.00

Part Numbers with "U" suffix include Bolt Kit and O Ring

Code 61 - 3000 PSI NPTF Thread Reducing

O-Ring Part No. Fig 1	Flat Face Part No. Fig 2	inches											Mounting Hardware			
		G Port Size (NPTF)	Pad Size	A	B	C	D	E	F	H	I	J	L Drill Dia	K Tap	O-Ring	SHCS
W43-12-16-U	-	3/4	1.00	2.17	2.75	1.031	2.062	1.50	.71	.75	1.81	1.560	.406	-	219	3/8-16x1.50
W43-16-20-U	-	1	1.25	2.68	3.12	1.188	2.312	1.61	.83	1.00	2.22	1.750	.469	-	222	7/16-14x1.75
W43-20-24-U	-	1 1/4	1.50	3.07	3.66	1.406	2.750	1.77	.98	1.25	2.50	2.115	.531	-	225	1/2-13x1.75
W43-24-32-U	-	1 1/2	2.00	3.54	4.00	1.688	3.062	1.77	.98	1.50	3.12	2.490	.531	-	228	1/2-13x1.75

Part Numbers with "U" suffix include Bolt Kit and O Ring

Code 62 - 6000 PSI NPTF Thread

O-Ring Part No. Fig 1	Flat Face Part No. Fig 2	inches											Mounting Hardware			
		G Port Size (NPTF)	Pad Size	A	B	C	D	E	F	H	I	J	L Drill Dia	K Tap	O-Ring	SHCS
W44-8-8-U	-	1/2	.50	1.81	2.21	.718	1.594	1.25	.63	.50	1.33	1.000	.344	5/16-18	210	5/16-18x1.25
W44-12-12-U	-	3/4	.75	2.17	2.80	.937	2.000	1.25	.83	.75	1.65	1.250	.406	3/8-16	214	3/8-16x1.50
W44-16-16-U	-	1	1.00	2.56	3.19	1.093	2.250	1.50	.98	1.00	1.98	1.560	.492	7/16-14	219	7/16-14x1.75
W44-20-20-U	-	1 1/4	1.25	3.07	3.75	1.250	2.625	1.50	1.06	1.25	2.36	1.750	.531	1/2-13	222	1/2-13x1.75
W44-24-24-U	-	1 1/2	1.50	3.70	4.41	1.437	3.125	1.75	1.18	1.50	2.68	2.115	.656	5/8-11	225	5/8-11x2.25
W44-32-32-U	-	2	2.00	4.50	5.28	1.750	3.812	1.75	1.46	2.00	3.38	2.490	.781	3/4-10	228	3/4-10x2.75

Part No. with "U" suffix include Bolt Kit and O Ring

Dimensions and specifications are subject to change without notice. Not all items are Made-To-Stock, contact us for availability.

02/14

Ph : 920-682-6877
Fx : 920-684-7210



sales@ldi-industries.com
www.ldi-industries.com

COUPLING & FLANGE CONNECTIONS

4 BOLT FLANGE - THREADED x O-RING FACE (CONT'D)

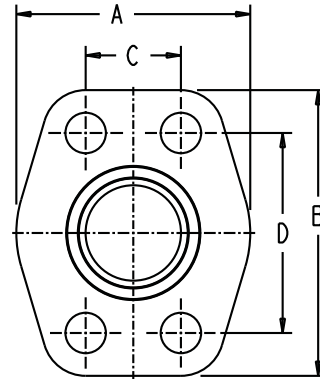
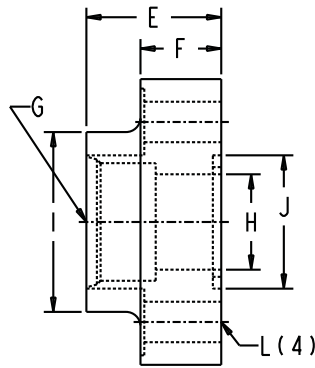


Figure 1

Refer to page 27 for metric mounting options

Code 61 - 3000 PSI SAE Straight Thread

O-Ring Part No. Fig 1	SAE Port Size	inches							G Straight Thread	inches					Mounting Hardware	
		Pad Size	A	B	C	D	E	F		H	I	J Max	L Drill Dia	K Tap	O-Ring	SHCS
W46-12-12-U	-12	.75	1.97	2.56	.875	1.875	1.42	.71	1 1/16-12	.75	1.54	1.255	.406	-	214	3/8-16x1.50
W46-16-16-U	-16	1.00	2.17	2.75	1.031	2.062	1.50	.71	1 5/16-12	1.00	1.81	1.565	.406	-	219	3/8-16x1.50
W46-20-20-U	-20	1.25	2.68	3.12	1.188	2.312	1.61	.83	1 5/8-12	1.25	2.22	1.755	.469	-	222	7/16-14x1.75
W46-24-24-U	-24	1.50	3.07	3.66	1.406	2.750	1.77	.98	1 7/8-12	1.50	2.50	2.125	.531	-	225	1/2-13x1.75

Part Numbers with "U" suffix include Bolt Kit and O Ring

Code 62 - 6000 PSI SAE Straight Thread

O-Ring Part No. Fig 1	SAE Port Size	inches							G Straight NPTF	inches					Mounting Hardware	
		Pad Size	A	B	C	D	E	F		H	I	J Max	L Drill Dia	K Tap	O-Ring	SHCS
W48-12-12-U	-12	.75	2.17	2.80	.937	2.000	1.25	.83	1 1/16-12	.75	1.65	1.255	.406	3/8-16	214	3/8-16x1.50
W48-16-16-U	-16	1.00	2.56	3.19	1.093	2.250	1.50	.98	1 5/16-12	1.00	1.98	1.565	.492	7/16-14	219	7/16-14x1.75
W48-20-20-U	-20	1.25	3.07	3.75	1.250	2.625	1.50	1.06	1 5/8-12	1.25	2.36	1.755	.531	1/2-13	222	1/2-13x1.75
W48-24-24-U	-24	1.50	3.70	4.41	1.437	3.125	1.75	1.18	1 7/8-12	1.50	2.68	2.125	.656	5/8-11	225	5/8-11x2.25
W48-32-32-U	-32	2.00	4.50	5.28	1.750	3.812	1.75	1.46	2 1/2-12	2.00	3.38	2.500	.781	3/4-10	228	3/4-10x2.75

Part No. with "U" suffix include Bolt Kit and O Ring

COUPLING & FLANGE CONNECTIONS

4 BOLT FLANGE - SOCKET x O-RING FACE

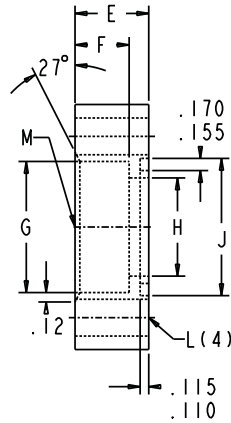
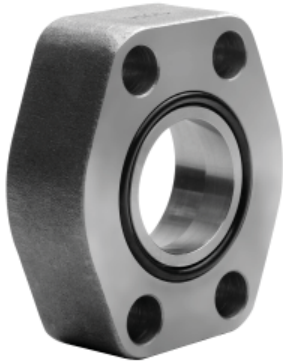
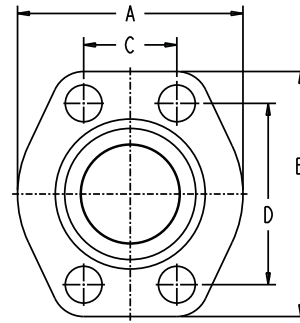


Figure 1



Refer to page 27 for metric mounting options

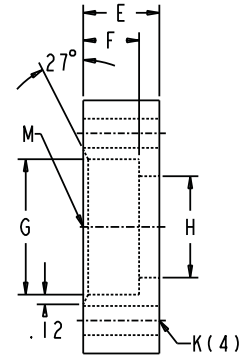


Figure 2

NOTE: All dimensions are inches

Code 61 - 3000 PSI Flat Socket-Pipe

O-Ring Part No. Fig 1	Flat Face Part No. Fig 2	M Port Size	Pad Dash Size	inches										Mounting Hardware		
				A	B	C	D	E	F	G Dia	H	J Max	L Drill Dia	K Tap	O-Ring	SHCS
W4-8-8-U	W61-8-8	1/2	-8	1.813	2.125	.688	1.500	.75	.560	.855	.50	1.005	.344	5/16-18	210	5/16-18x1.50
W4-12-12-U	W61-12-12	3/4	-12	2.063	2.563	.875	1.875	.75	.560	1.062	.75	1.255	.406	3/8-16	214	3/8-16x1.50
W4-16-16-U	W61-16-16	1	-16	2.313	2.750	1.031	2.063	.88	.630	1.326	1.00	1.565	.406	3/8-16	219	3/8-16x1.75
W4-20-20-U	W61-20-20	1 1/4	-20	2.875	3.125	1.188	2.313	.94	.690	1.672	1.25	1.755	.469	7/16-14	222	7/16-14x1.75
W4-24-24-U	W61-24-24	1 1/2	-24	3.250	3.688	1.406	2.750	1.19	.750	1.922	1.50	2.125	.531	1/2-13	225	1/2-13x2.25
W4-32-32-U	W61-32-32	2	-32	3.813	4.000	1.688	3.063	1.38	.875	2.406	2.00	2.500	.531	1/2-13	228	1/2-13x2.50
W4-40-40-U	W61-40-40	2 1/2	-40	4.281	4.500	2.000	3.500	1.75	1.00	2.906	2.50	3.005	.531	1/2-13	232	1/2-13x2.75
W4-48-48-U	W61-48-48	3	-48	5.156	5.313	2.438	4.188	2.12	1.25	3.547	3.00	3.625	.656	5/8-11	237	5/8-11x3.50

Part No. with "U" suffix include Bolt Kit and O Ring

500 PSI Flat Socket-Pipe

O-Ring Part No. Fig 1	Flat Face Part No. Fig 2	M Port Size	Pad Dash Size	inches										Mounting Hardware		
				A	B	C	D	E	F	G	H	J Max	L Drill Dia	K Tap	O-Ring	SHCS
W72-48-48-U	-	3	-48	5.12	5.31	2.438	4.188	1.38	1.12	3.547	3.00	3.625	.656	-	237	5/8-11x2.50
W72-56-56-U	-	3 1/2	-56	5.50	6.00	2.750	4.750	1.44	1.19	4.047	3.50	4.115	.656	-	241	5/8-11x2.75
W72-64-64-U	-	4	-64	6.00	6.38	3.062	5.125	1.50	1.25	4.578	4.00	4.615	.656	-	245	5/8-11x2.75

Part No. with "U" suffix include Bolt Kit and O Ring

Code 62 - 6000 PSI Flat Socket-Pipe

O-Ring Part No. Fig 1	Flat Face Part No. Fig 2	M Port Size	Pad Dash Size	inches										Mounting Hardware		
				A	B	C	D	E	F	G	H	J Max	L Drill Dia	K Tap	O-Ring	SHCS
-	W60-20-20	1 1/4	-20	3.06	3.75	1.250	2.625	1.50	.690	1.672	1.25	1.755	.531	1/2-13	222	1/2-13x2.50
-	W60-24-24	1 1/2	-24	3.75	4.44	1.437	3.125	1.75	.750	1.922	1.50	2.125	.656	5/8-11	225	5/8-11x3.00

Dimensions and specifications are subject to change without notice. Not all items are Made-To-Stock, contact us for availability.

02/14

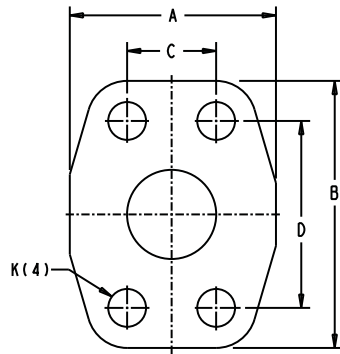
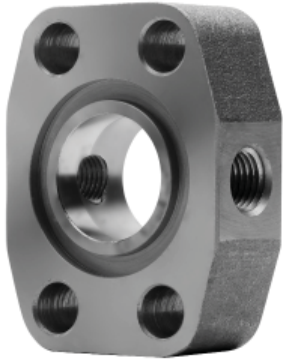
Ph : 920-682-6877
Fx : 920-684-7210



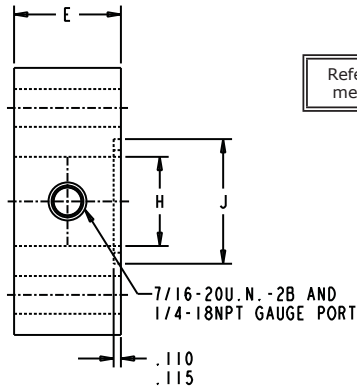
sales@ldi-industries.com
www.ldi-industries.com

COUPLING & FLANGE CONNECTIONS

4 BOLT FLANGE - GAGE PORT SPACER



Includes o-ring and plugs for both ports



Refer to page page 27 for metric mounting options

NOTE: All dimensions are inches

Code 61 - SAE O Ring Spacer											
inches											
Part No.	Pad Dash Size	A	B	C ±.010	D ±.010	E	H	J Min.	J Max.	K Dia.	O-ring No.
AS-12-GP	-12	2.063	2.563	0.875	1.875	0.88	0.750	1.250	1.255	0.406	214
AS-16-GP	-16	2.313	2.750	1.031	2.063	0.88	1.000	1.560	1.565	0.406	219
AS-20-GP	-20	2.875	3.125	1.188	2.313	0.94	1.250	1.750	1.755	0.469	222
AS-24-GP	-24	3.250	3.688	1.406	2.750	1.19	1.500	2.115	2.125	0.531	225
AS-32-GP	-32	3.813	4.000	1.688	3.063	1.38	2.000	2.490	2.500	0.531	228

Code 62 - SAE O Ring Spacer											
inches											
Part No.	Pad Dash Size	A	B	C ±.010	D ±.010	E	H	J Min.	J Max.	K Dia.	O-ring No.
ASX-20-GP	-20	3.06	3.75	1.250	2.625	1.500	1.250	1.750	1.755	0.531	222

Dimensions and specifications are subject to change without notice. Not all items are Made-To-Stock, contact us for availability.

02/14

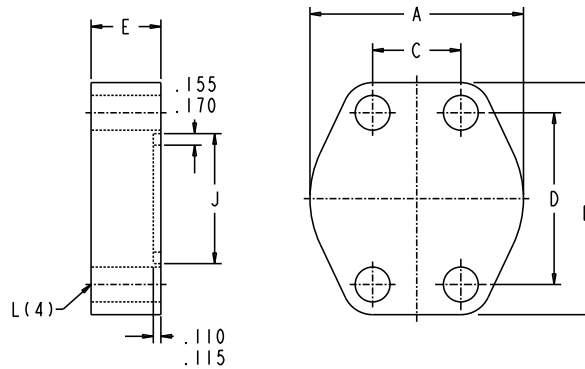
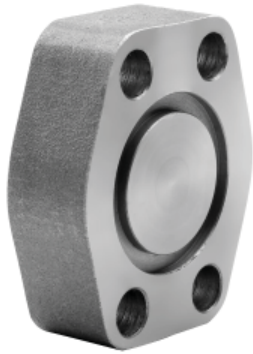
Ph : 920-682-6877
Fx : 920-684-7210



sales@ldi-industries.com
www.ldi-industries.com

COUPLING & FLANGE CONNECTIONS

4 BOLT FLANGE - BLANKING x O-RING FACE

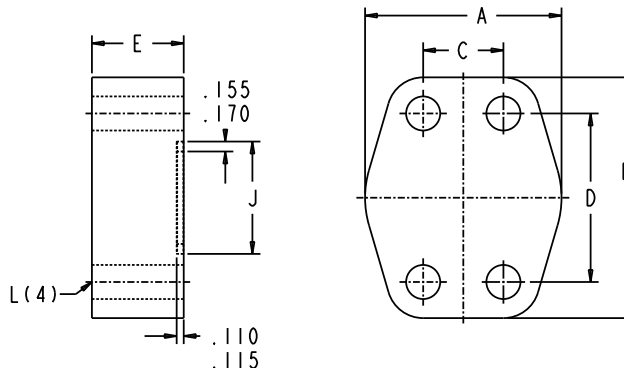


Refer to page 27 for metric mounting options

NOTE: All dimensions are inches

Code 61 - 3000 PSI Blanking											
O-Ring Part No.	Pad Dash Size	inches								Mounting Hardware	
		A	B	C	D	E	J Min	J Max	L Drill Dia	O-Ring	SHCS
		W36-12-12-U	-12	2.063	2.563	.875	1.875	.750	1.250	1.255	.406
W36-16-16-U	-16	2.313	2.750	1.031	2.063	.880	1.560	1.565	.406	219	3/8-16x1.75
W36-20-20-U	-20	2.875	3.125	1.188	2.313	.940	1.750	1.755	.469	222	7/16-14x1.75
W36-24-24-U	-24	3.250	3.688	1.406	2.750	1.190	2.115	2.125	.531	225	1/2-13x2.25
W36-32-32-U	-32	3.813	4.000	1.688	3.063	1.440	2.490	2.500	.531	228	1/2-13x2.50
W36-40-40-U	-40	4.281	4.500	2.000	3.500	1.815	2.995	3.005	.531	232	1/2-13x2.75

The Part No. suffix "U" reflects Bolt Kit and O-Ring are included.



NOTE: All dimensions are inches

Code 62 - 6000 PSI Blanking											
O-Ring Part No.	Pad Dash Size	inches								Mounting Hardware	
		A	B	C	D	E	J Min	J Max	L Drill Dia	O-Ring	SHCS
		W38-12-12-U	-12	2.50	2.95	.937	2.000	1.250	1.250	1.255	.406
W38-16-16-U	-16	2.75	3.19	1.093	2.250	1.500	1.560	1.565	.469	219	7/16-14x1.75
W38-24-24-U	-24	3.75	4.44	1.437	3.125	1.815	2.115	2.125	.656	225	5/8-11x2.25

The Part No. suffix "U" reflects Bolt Kit and O-Ring are included.

Dimensions and specifications are subject to change without notice. Not all items are Made-To-Stock, contact us for availability.

02/14

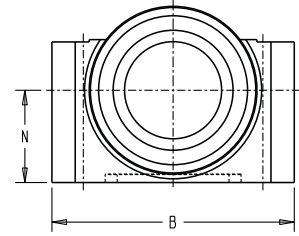
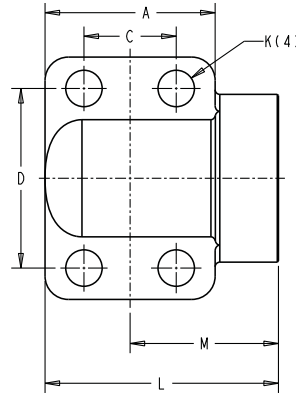
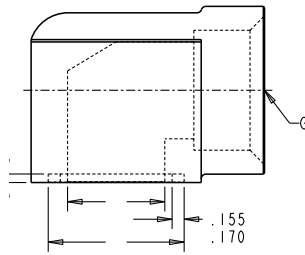
Ph : 920-682-6877
Fx : 920-684-7210



sales@ldi-industries.com
www.ldi-industries.com

COUPLING & FLANGE CONNECTIONS

ELBOW - 4 BOLT FLANGE x NPTF



Refer to page 27 for metric mounting options

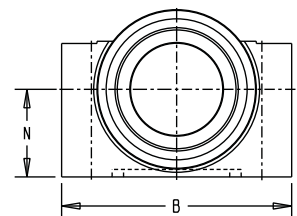
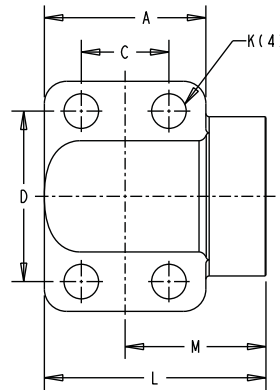
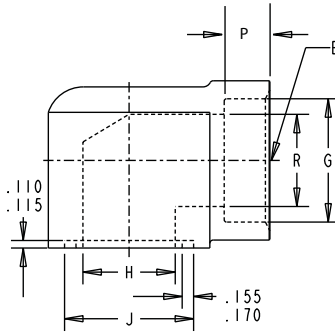
Figure 1

NOTE: All dimensions are inches

Code 61 - 3000 PSI Elbow NPTF Thread																		
O-Ring Part No. Fig 1	G Port Size (NPTF)	Pad Dash Size	inches													Mounting Hardware		
			A	B	C	D	E	H	J Min	J Max	K Drill Dia	L	M	N	O-Ring	SHCS		
			W168-16-16-U	1	-16	1.94	2.75	1.031	2.062	1.50	1.00	1.560	1.565	.406	2.62	1.66	1.062	219
W168-20-20-U	1 1/4	-20	2.19	3.12	1.188	2.312	1.81	1.25	1.750	1.755	.469	3.00	1.91	1.188	222	7/16-14x2.75		

Part No. with "U" suffix include Bolt Kit and O Ring

ELBOW - 4 BOLT FLANGE x PIPE SOCKET



Refer to page 27 for metric mounting options

Figure 2

NOTE: All dimensions are inches

Code 61 - 3000 PSI Elbow Socket Weld																		
O-Ring Part No. Fig 2	E Port Size	Pad Dash Size	inches													Mounting Hardware		
			A	B	C	D	G	H	J Min	J Max	K Drill Dia	L	M	N	P	R	O-Ring	SHCS
			W176-12-12-U	3/4	-12	1.69	2.56	.875	1.875	1.062	.75	1.250	1.255	.406	2.28	1.44	.875	.56
W176-16-16-U	1	-16	1.94	2.75	1.031	2.062	1.328	1.00	1.560	1.565	.406	2.62	1.66	1.062	.56	1.00	219	3/8-16x2.25
W176-20-20-U	1 1/4	-20	2.19	3.12	1.188	2.312	1.672	1.25	1.750	1.755	.469	3.00	1.91	1.188	.62	1.25	222	7/16-14x2.75
W176-24-24-U	1 1/2	-24	2.56	3.69	1.406	2.750	1.922	1.50	2.115	2.125	.531	3.28	2.05	1.312	.69	1.50	225	1/2-13x3.00
W176-32-32-U	2	-32	3.06	4.33	1.688	3.062	2.406	2.00	2.490	2.500	.531	3.81	2.28	1.656	.75	2.00	228	1/2-13x3.50

Part No. with "U" suffix include Bolt Kit and O Ring

Dimensions and specifications are subject to change without notice. Not all items are Made-To-Stock, contact us for availability.

02/14

Ph : 920-682-6877
Fx : 920-684-7210



sales@ldi-industries.com
www.ldi-industries.com