

# PUMP MOTOR ADAPTERS FOR ELECTRIC MOTORS

## 284 THRU 286TC/TSC & 284 THRU 286UC/USC

Pump Motor Adapters (Bell Housings) are designed to assure proper shaft alignment between the electric motor and your hydraulic pump. They also reduce assembly cost over using a foot mounting bracket or riser.

### Standard Features:

- Drive coupling access hole with safety orange removable cover
- Electric Motor mounting bolts provided
- Pump mounting orientation can be rotated in 90 degree increments by rotating the adapter on the electric motor

### Standard Material:

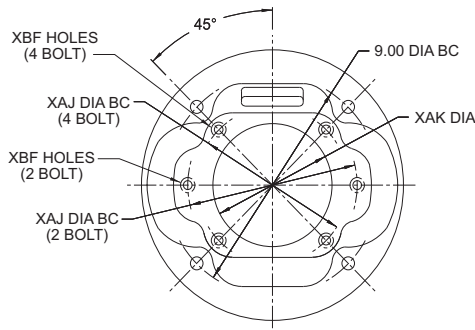
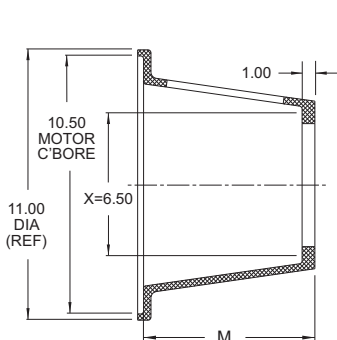
- Cast Aluminum

### NOTES:

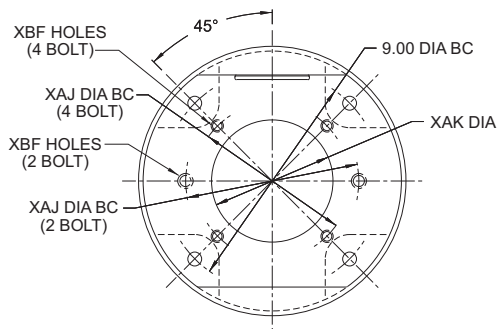
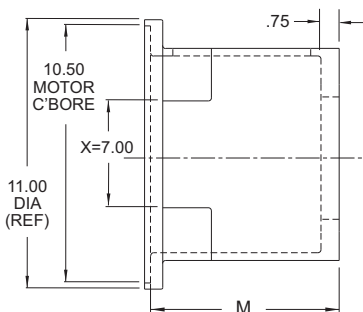
- X = Permissible inside radial clearance
- All dimensions are inches

### WARNING:

- To avoid possible injury, access hole cover must be in place during operation



**STYLE 11 ADAPTER**  
Horizontal Mounting Only



**STYLE 12 ADAPTER**  
Horizontal Mounting Only

If your pump is not listed or is a non-standard pump, contact us for special machining and/or information. Not all pump mounting holes are supplied on every adapter.

Motor Size	284TSC	286TSC	284TC	286TC	284UC	286USC
HP/1800 RPM	25	30	25	30	15	20
Shaft Diameter	1.62	1.62	1.88	1.88	1.62	1.62
Key Size	3/8	3/8	1/2	1/2	3/8	3/8
Shaft Length	3.00	3.00	4.38	4.38	4.62	4.62



Dimensions and specifications are subject to change without notice. Not all items are Made-To-Stock, contact us for availability.

11/15

Ph : 920-682-6877  
Fx : 920-684-7210



sales@ldi-industries.com  
www.ldi-industries.com

# PUMP MOTOR ADAPTERS FOR ELECTRIC MOTORS

## 284 THRU 286TC/TSC & 284 THRU 286UC/USC (CONT'D)

Pump Mounts - 284 thru 286TC/TSC and 284 thru 286UC/USC									
Pump Type	Flange	XAJ Bolt Circle	XAK Pump Pilot	XBF Mounting Holes	Adapter Style	Mounting		M Face to Face	Part No.
						Horizontal	Vertical		
<b>Standard SAE Pump Flanges</b>									
SAE A	2 Bolt	4.19	3.251	3/8-16	11	Yes	No	5.88	<b>1851</b>
					11	Yes	No	6.75	<b>167199</b>
					11	Yes	No	7.19	<b>1975</b>
					11	Yes	No	7.88	<b>1852</b>
					11	Yes	No	8.88	<b>1978</b>
SAE B	2 Bolt 4 Bolt	5.75 5.00	4.001	1/2-13	11	Yes	No	5.88	<b>1853</b>
					11	Yes	No	6.75	<b>167299</b>
					11	Yes	No	7.19	<b>1979</b>
					11	Yes	No	7.88	<b>1854</b>
					11	Yes	No	8.88	<b>1980</b>
SAE C	2 Bolt 4 Bolt	7.12 6.38	5.001	5/8-11 1/2-13	11	Yes	No	5.88	<b>1855</b>
					11	Yes	No	6.75	<b>167399</b>
					11	Yes	No	7.19	<b>1981</b>
					11	Yes	No	7.88	<b>1856</b>
					11	Yes	No	8.88	<b>1982</b>
SAE D	2 Bolt 4 Bolt	9.00	6.001	3/4-10	12	Yes	No	7.91	<b>161699</b>
SAE B (45°)	2 Bolt	5.75	4.001	1/2-13	11	Yes	No	7.19	<b>1857</b>
					11	Yes	No	7.88	<b>181499</b>
SAE C (45°)	2 Bolt	7.12	5.001	5/8-11	12	Yes	No	7.91	<b>1858</b>
<b>4 Bolt Square Mounting Flanges</b>									
4HC	4 Bolt	8.48	3.751	5/8-11	12	Yes	No	7.91	<b>1887</b>
<b>Metric Series Pump Flanges</b>									
125mm	2 Bolt 4 Bolt	180mm 160mm	125.02mm	5/8-11 1/2-13	11	Yes	No	7.88	<b>3858</b>
140mm	2 Bolt 4 Bolt	200mm 180mm	140.02mm	5/8-11	12	Yes	No	7.88	<b>148399*</b>

\*Non-stock special order item