

SELF FLARE TUBE FITTINGS

BA66 SERIES

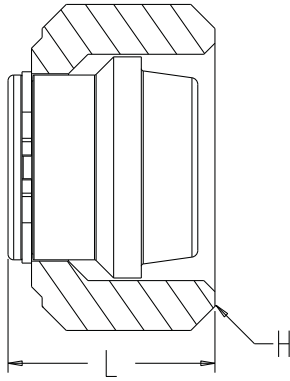
The BA66 Series self flare cap is used on fittings to close off BA Series Self Flare tube connections and is independent of the wall thickness of the tubing that makes the connection.

Standard Features:

- On BA Self Flare fittings, closes off connection sizes from -2 (.125 inch) to -32 (2.00 inch)
- Includes swivel nut and solid stem

Standard Materials:

- Steel construction
- Black oxide finish on stem and retainer
- Zinc plated, steel swivel tube nut



BA66 Series (inches)			
Part No.	Tube OD	L	H
BA66-2	1/8	0.48	7/16
BA66-3	3/16	0.50	1/2
BA66-4	1/4	0.63	5/8
BA66-5	5/16	0.66	11/16
BA66-6	3/8	0.69	3/4
BA66-8	1/2	0.75	7/8
BA66-10	5/8	0.75	1
BA66-12	3/4	0.81	1 1/4
BA66-14	7/8	0.84	1 3/8
BA66-16	1	0.91	1 1/2
BA66-20	1 1/4	1.19	2
BA66-24	1 1/2	1.31	2 1/4
BA66-32	2	1.34	2 7/8

Dimensions and specifications are subject to change without notice. Not all items are Made-To-Stock, contact us for availability.

02/14

Ph : 920-682-6877
Fx : 920-684-7210

LDI Industries

sales@ldi-industries.com
www.ldi-industries.com

Pg SF-19