

SELF FLARE TUBE FITTINGS

BA77 SERIES

The BA77 Series plugs are designed to plug BA style tube assemblies. For the tube assembly, the OD and wall thickness of the tube to be joined to the Self Flare plug will determine the dash size and whether a BA or BAX version of the Self Flare plug is required for the application. The tube assembly must be assembled with the tube sleeve (BA19 Series) and swivel tube nut (BA18 Series).

Standard Features:

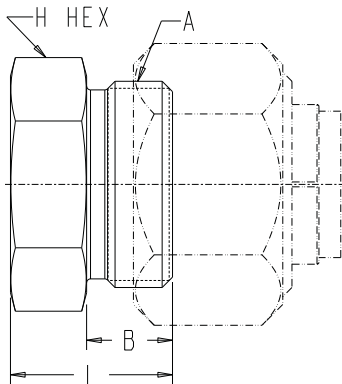
- Tube sizes from -2 (.125 inch) to -32 (2.00 inch)
- BAX77 plugs available for applications with heavy wall tubing

Standard Materials:

- Steel construction
- Black oxide finish on plug body

CAUTION

- System operating conditions and maximum pressures dictate tubing requirements. LDI Self Flare fittings require matching the tube connection on the adapter to the tube wall thickness selected for the application.
- Fully annealed and cleaned tubing is preferred. Consult factory for applications that require alloy tubing or tube wall thicknesses that exceed published limits for BA and BAX tube connections.



BA77 Series (inches)

Part No.	Tube OD	A	B	L	H
BA77-2	1/8	5/16-24	0.31	0.53	7/16
BA77-3	3/16	3/8-24	0.34	0.56	7/16
BA77-4	1/4	1/2-20	0.38	0.59	1/2
BA77-5	5/16	9/16-18	0.41	0.63	9/16
BA77-6	3/8	5/8-18	0.41	0.67	5/8
BA77-8	1/2	3/4-16	0.44	0.70	3/4
BA77-10	5/8	7/8-16	0.44	0.77	7/8
BA77-12	3/4	1 1/16-16	0.44	0.83	1 1/8
BA77-14	7/8	1 3/16-16	0.44	0.83	1 1/4
BA77-16	1	1 5/16-16	0.50	0.89	1 3/8
BA77-20	1 1/4	1 5/8-16	0.69	1.16	1 3/4
BA77-24	1 1/2	1 15/16-16	0.69	1.19	2
BA77-32	2	2 1/2-12	0.69	1.39	2 5/8