

SELF FLARE TUBE FITTINGS

RBA1000 SERIES

The RBA1000 Series self flare straight adapter is made up of a tube connection on one end and a SAE o-ring boss on the opposite end. For the tube connection, the OD and wall thickness of the tube to be joined to the Self Flare fitting will determine the dash size and whether a BA or BAX version of the Self Flare fitting is required for the application. The RBA1000 series adapters connect tubes to straight threaded ports designed to SAE Standard, J1926/1.

Standard Features:

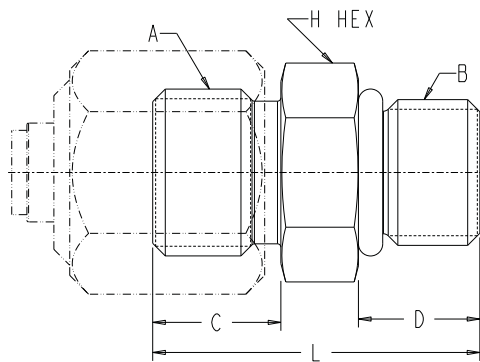
- Tube sizes from -4 (.25 inch) to -32 (2.00 inch)
- O-ring boss sizes from -4 (7/16-20) to -32 (2½-12)
- Several jump sizes are available
- RBAX1000 adapters available for applications with heavy wall tubing
- Includes swivel tube nut and Self Flare sleeve for tube connection
- Includes o-ring for port connection

Standard Materials:

- Steel construction
- Buna N seal
- Black oxide finish on fitting body and tube sleeve
- Zinc plated, steel swivel tube nut

CAUTION

- System operating conditions and maximum pressures dictate tubing requirements. LDI Self Flare fittings require matching the tube connection on the adapter to the tube wall thickness selected for the application.
- Fully annealed and cleaned tubing is preferred. Consult factory for applications that require alloy tubing or tube wall thicknesses that exceed published limits for BA and BAX tube connections.



RBA1000 Series (inches)

Part No.	Tube OD	A	B (NPTF)	C	D	L	H
RBA1000-4	1/4	1/2-20	7/16-20	0.38	0.36	0.97	9/16
RBA1000-4-5	1/4	1/2-20	1/2-20	0.38	0.36	0.97	5/8
RBA1000-5	5/16	9/16-18	1/2-20	0.41	0.36	1.00	5/8
RBA1000-6	3/8	5/8-18	9/16-18	0.41	0.39	1.06	11/16
RBA1000-6-8	3/8	5/8-18	3/4-16	0.41	0.44	1.11	7/8
RBA1000-8	1/2	3/4-16	3/4-16	0.44	0.44	1.14	7/8
RBA1000-8-10	1/2	3/4-16	7/8-14	0.44	0.50	1.27	1
RBA1000-10	5/8	7/8-16	7/8-14	0.44	0.50	1.27	1
RBA1000-12	3/4	1 1/16-16	1 1/16-12	0.44	0.59	1.42	1 1/4
RBA1000-12-16	3/4	1 1/16-16	1 5/16-12	0.44	0.59	1.42	1 1/2
RBA1000-14	7/8	1 3/16-16	1 3/16-12	0.44	0.59	1.42	1 3/8
RBA1000-16	1	1 5/16-16	1 5/16-12	0.50	0.59	1.48	1 1/2
RBA1000-20	1 1/4	1 5/8-16	1 5/8-12	0.69	0.59	1.77	1 7/8
RBA1000-24	1 1/2	1 15/16-16	1 7/8-12	0.69	0.59	1.78	2 1/8
RBA1000-32	2	2 1/2-12	2 1/2-12	0.69	0.59	1.98	2 3/4

Dimensions and specifications are subject to change without notice. Not all items are Made-To-Stock, contact us for availability.

02/14

Ph : 920-682-6877
Fx : 920-684-7210

LDI Industries

sales@ldi-industries.com
www.ldi-industries.com

Pg SF-23