

# OPERATION SCHEMATIC

## RVP100 SERIES RESERVOIR, AIR OPERATED / DUAL REGULATORS ONLY

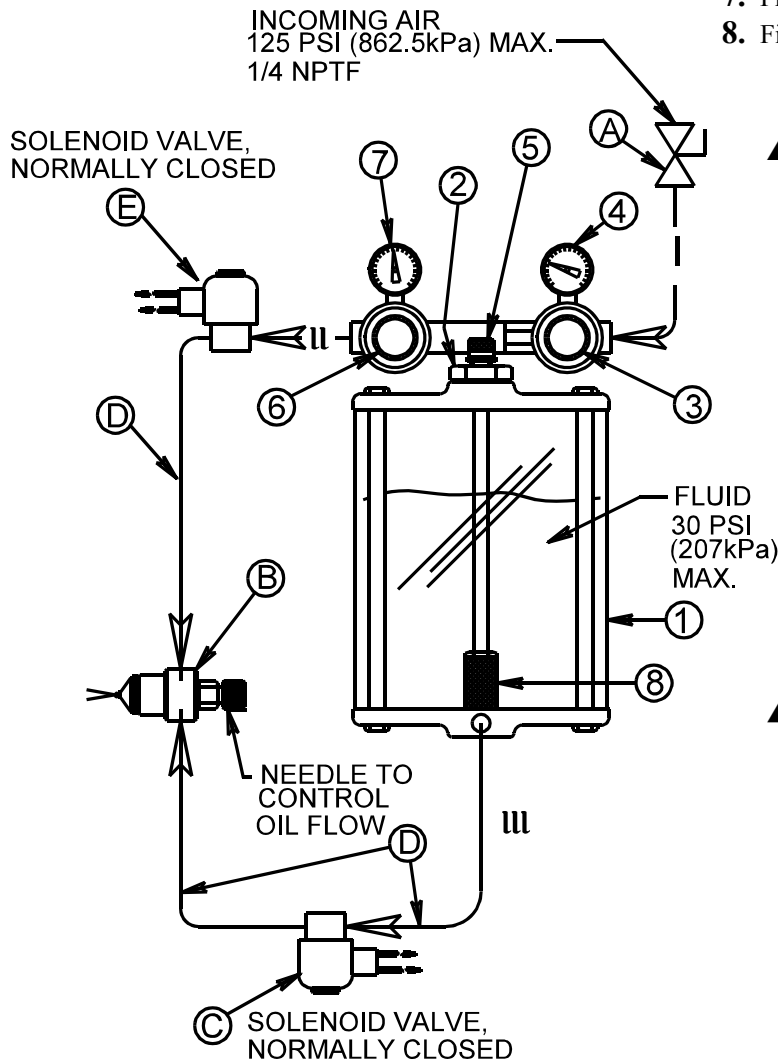
### RESERVOIR CONNECTIONS

(See drawing below)

- I 1/4 NPTF incoming shop air.
- II Regulated air to valve - 1/4 NPTF.
- III Regulated oil to valve - 1/8 NPTF.

### RESERVOIR FEATURES

1. Select capacity. 1 quart-2 gallon (.946 liter-7.6 liter) acrylic.
2. Filler cap.
3. Regulator-fluid pressure 30 psig (207 kPa) max.
4. Pressure gage-fluid.
5. Relief valve-set 30 psi (207 kPa).
6. Regulator-air to spray valve.
7. Pressure gage-0-30 psi (0-207 kPa) to spray valve.
8. Filter- 40 micron.



### SUGGESTIONS FOR SOLENOID OPERATION

#### ▲ CONTINUOUS SPRAY:

- Wire both solenoids to auxiliary contacts on the “machine” being lubricated.
- If over-run of liquid can be tolerated when the “machine” is shut down you can simplify the installation by omitting solenoids C and E and replacing the ball valve A with one solenoid valve P/N ESV512 wired to the auxiliary contacts.

#### ▲ TRIGGERED SPRAY with a rate less than 10 cycles per minute:

- Wire both solenoids to an electromechanical switch or a non-contact switch which is activated by “machine” movement. Solenoid E for air should be installed as close as possible to the spray valve B.

#### ▲ PULSED OR TRIGGERED SPRAY with a rate more than 10 cycles per minute:

- Wire solenoid C for liquid to a repeat cycle timer or “machine” activated trigger switch. Wire solenoid E for air to the “machine” auxiliary contacts so the air flows continuously to minimize droplet formation.

Do not use a filled fluid such as molydisulfide dispersion, teflon dispersion or any other particle dispersion. They will clog the fine openings of the unit, requiring a total dismantling of the system.

### ITEMS NOT INCLUDED WITH RESERVOIR

- A. 1/4 x 1/4 ball valve - shop air shut off.
- B. Spray valve (P/N SV101, SV102 or SV103).
- C. Solenoid valve (P/N ESV501) - shut off oil to spray valve.
- D. .25 (6.35mm) O.D. semi-rigid or metal as needed, and required fittings.
- E. Solenoid valve (P/N ESV501) - shut off air to spray valve.



## LUBE DEVICES, INC.

1864 NAGLE AVE., P.O. BOX 1810, MANITOWOC, WI 54221-1810  
PHONE: (920) 682-6877 FAX: (920) 684-7210  
E-MAIL: sales@lubedevices.com WEBSITE: www.lubedevices.com

## OPERATION SCHEMATIC

12//02 **BULLETIN F1097-0**