

PRECISION METERING PUMP - AIR OPERATED

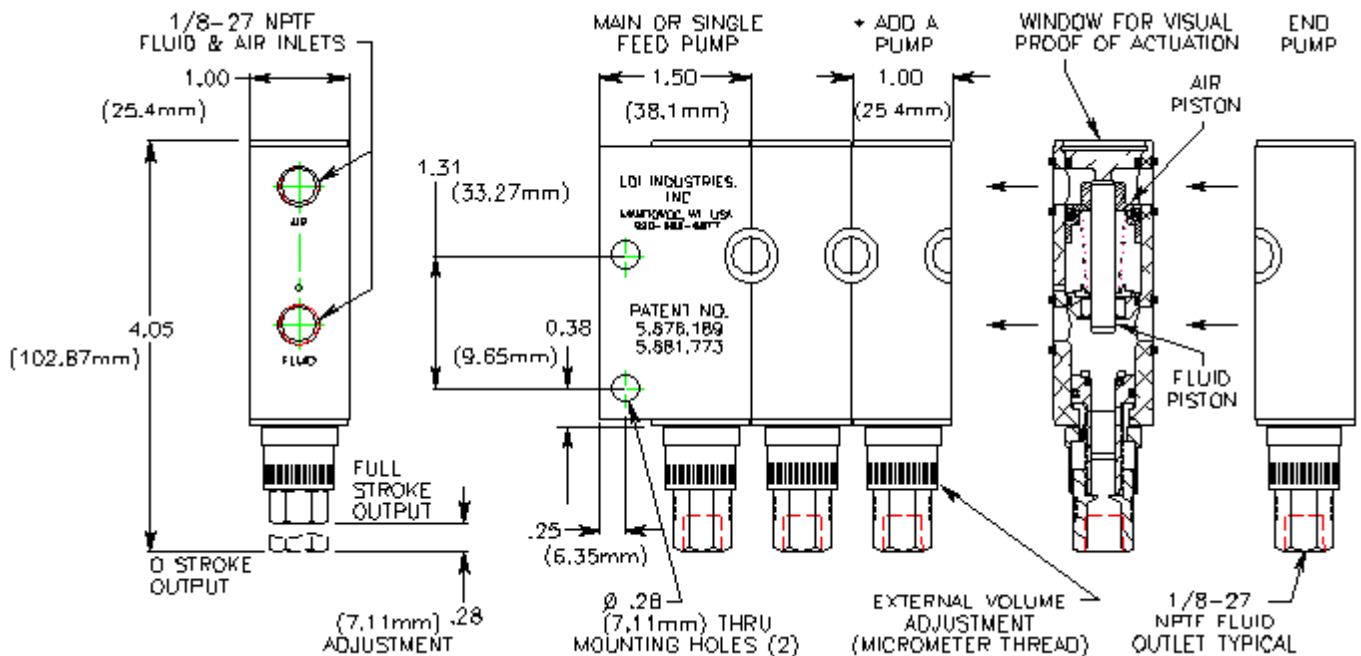
LDI INDUSTRIES' air operated metering pumps are unique in that each outlet/feed is an individual positive displacement pump. These pumps are ideal for dispensing precise easily adjustable volumes of a variety of fluids including: oils or grease for lubrication, inks, dyes, chemical additives and cutting fluids. The factory should be consulted before using with high water base fluids. The air operated metering pumps are positive displacement, self priming with up to 27 InHg (686mmHg) and will operate in any position. They are available in 1 to 15 feeds for oil or 1 to 5 feeds for grease with each feed independently and externally adjustable from 0 to .012 cu. in. (0 to .197 cu. cm.) by a micrometer thread .025 (.572mm) pitch. A patented feature allows additional pumps (AMP100) to be easily added to a PMP100-02 or more pump banks. The air operated metering pumps are intended for "on command", higher output pressure applications where a compressed air supply of 25 to 125 PSIG (172.5 to 862.5 kPa) is available. All feeds will actuate at the same time "on command" by using compressed air through LDI Industries' 3-way Solenoid Valve (item no. 832160) actuated by LDI Industries' Repeat Cycle Timers (item no. 832150 or 833380). LDI Industries' R100 series filtered reservoirs (Bulletin F357-7) are ideal for oil applications. Grease applications should use LDI Industries' GCA100 or GCA200 Grease Cartridge Adapters (Bulletin F1867-1) or GR75 or GR168 Grease Reservoirs (Bulletin F1867-2).

STANDARD MATERIALS:

- Aluminum, Brass, Steel, Acrylic
- Buna N & Viton seals

OPERATING CONDITIONS:

- Maximum working temperature up to 120°F (48.9°C)
Minimum working temperature 0°F (-17.7°C) oil
Minimum working temperature 32°F (0°C), grease
- Maximum output pressure up to 300 PSIG (2068 kPa)



- **PATENT NUMBERS: 5,876,189 and 5,881,773**

HOW TO ORDER:

After PMP100 catalog number, specify number of feeds required, separated by a dash (-).
Specify 1 through 15 feeds-01/-15

EXAMPLE:

PMP100-05 — 5 FEED

*TO "ADD A PUMP", to existing multiple feed bank, order catalog number **AMP100**
(Not used with single feed P/N PMP100-01)



Lube Devices • Flodar • Hydra-Tool • Vescor
1864 Nagle Ave. P. O. Box 1810
Manitowoc, WI 54221-1810
Phone: (920) 682-6877 Fax: (920) 684-7210
E-MAIL: sales@ldi-industries.com WEBSITE: www.ldi-industries.com

PRECISION METERING PUMP
AIR OPERATED
5/07 **BULLETIN F1837-1**
ISO9001:2000 CERTIFIED