

# RESERVOIR - HORIZONTAL, GRAVITY

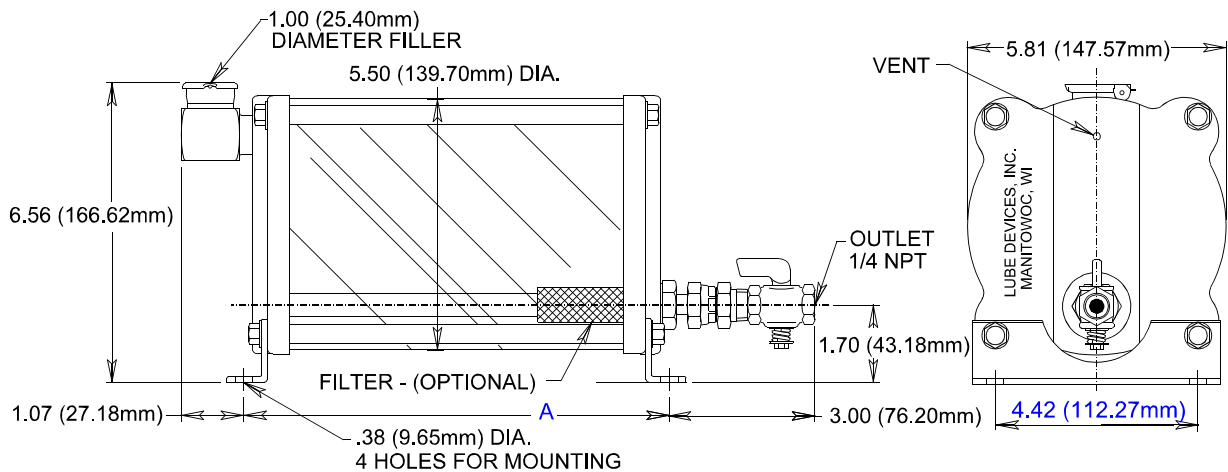
Reservoir features heavy duty over-bolt construction. Large capacity manually operated full flow reservoir can be mounted in an accessible location to serve as a central supply for an oiling system. Unit is easily disassembled for occasional cleaning. All reservoirs feature self-closing snap lid filler caps, vented on vertical plane to minimize the possibility of dust and dirt from entering the reservoir through the vent. Add a solenoid valve for automatic operation, see Bulletin F727. Optional 40 micron filter is available - **Please specify.**

## STANDARD MATERIALS:

- Aluminum construction
- Break resistant, colorless transparent acrylic
- Buna N seals

## OPERATING CONDITIONS:

- Maximum operating temperature up to 160°F (71.1°C)
- Rating is at atmospheric pressure



**MODIFICATIONS AVAILABLE MADE TO ORDER - CONSULT OUR FACTORY  
(MINIMUM ORDER MAY BE REQUIRED)**

CATALOG NUMBER		CAPACITY	A INCHES (mm)
WITHOUT FILTER	WITH FILTER		
RHG101	RHG151	1 quart (.95 liter)	5.75 (146.05)
RHG102	RHG152	1/2 gallon (1.9 liter)	9.31 (236.47)
RHG103	RHG153	1 gallon (3.8 liter)	14.25 (361.95)
RHG104	RHG154	2 gallon (7.6 liter)	27.31 (693.67)



## LUBE DEVICES, INC.

1864 NAGLE AVE., P.O. BOX 1810, MANITOWOC, WI 54221-1810  
 PHONE: (920) 682-6877 FAX: (920) 684-7210  
 E-MAIL: sales@lubedevices.com WEBSITE: www.lubedevices.com

RESERVOIR - HORIZONTAL,  
GRAVITY

**BULLETIN F297**

4/02