

LIQUID LEVEL GAGE - FRONT MOUNT WITH PIPE ADAPTERS

These direct reading closed circuit style gages are provided with pipe adapters for mounting in heavy wall tank or weld spuds on reservoir wall. Brass pipe thread adapters provide break point for assembly. Bottom closure cap on gage can be used as a drain. Other materials for pipe thread adapters are available - **Please specify**. All parts are machined from bar stock. Sight is fully recessed in gage body for excellent protection. The unique construction of these gages provide a .06 (1.52mm) alignment at each stud to facilitate mounting. Centers over 20.00 (508.00mm) are available as "Special made to order".

STANDARD MATERIALS:

- Aluminum construction
- Buna N seals
- Borosilicate glass with redline on white background for distinct level reading and maximum fluid compatibility
- Brass pipe thread adapters

OPERATING CONDITIONS:

- See ENG. STD. 109

G607 PATENTED

HOW TO ORDER:

WHEN ORDERING, SPECIFY THE FOLLOWING, AFTER THE SERIES NUMBER SEPARATING EACH WITH A DASH (-):

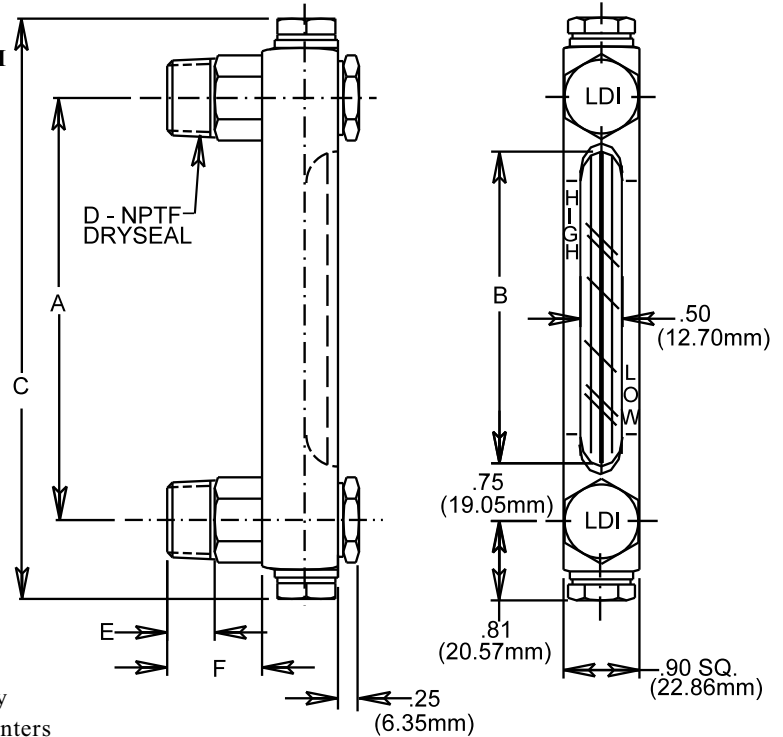
- A- Aluminum gage body (standard)
- B- Brass gage body (optional)
- S- Steel gage body (optional)
- Y- Stainless steel gage body (optional)

- 1- Buna N seals (standard)
- 2- Butyl seals (optional)
- 3- Viton A® seals (optional)
- 4- Ethylene Propylene seals (optional)
- 5- Silicone seals (optional)

- SPECIFY PIPE THREAD SIZE:

- 2- 1/4 Male pipe thread
- 3- 3/8 Male pipe thread
- 4- 1/2 Male pipe thread
- 5- 3/4 Male pipe thread

EXAMPLE: G607-06-A-1-4 — 1/2 pipe thread
 — Buna N seals
 — Aluminum gage body
 — 6.00 (152.40mm) Centers
 — Series G607



MODIFICATIONS AVAILABLE MADE TO ORDER - CONSULT OUR FACTORY (MINIMUM ORDER MAY BE REQUIRED)

| SERIES NUMBER | A - CENTERS INCHES (mm) | B - SIGHT INCHES (mm) | C - LENGTH INCHES (mm) |
|---------------|-------------------------|-----------------------|------------------------|
| G607 | 03 (76.20) | 1.50 (38.10) | 4.62 (117.35) |
| | 04 (101.60) | 2.50 (63.50) | 5.62 (142.75) |
| | 05 (127.00) | 3.50 (88.90) | 6.62 (168.15) |
| | 06 (152.40) | 4.50 (114.30) | 7.62 (193.55) |
| | 07 (177.80) | 5.50 (139.70) | 8.62 (218.95) |
| | 08 (203.20) | 6.50 (165.10) | 9.62 (244.35) |
| | 09 (228.60) | 7.50 (190.50) | 10.62 (269.75) |
| | 10 (254.00) | 8.50 (215.90) | 11.62 (295.15) |
| | 12 (304.80) | 10.50 (266.70) | 13.62 (345.95) |

| D | E - INCHES (mm) | F - INCHES (mm) |
|--------|-----------------|-----------------|
| 1/4-18 | .56 (14.22) | 1.19 (30.23) |
| 3/8-18 | .56 (14.22) | 1.12 (28.45) |
| 1/2-14 | .75 (19.05) | 1.12 (28.45) |
| 3/4-14 | .75 (19.05) | 1.12 (28.45) |



Lube Devices • Flodar • Hydra-Tool • Vescor
 1864 Nagle Ave. P. O. Box 1810
 Manitowoc, WI 54221-1810
 Phone: (920) 682-6877 Fax: (920) 684-7210
 E-MAIL: sales@ldi-industries.com WEBSITE: www.ldi-industries.com

LIQUID LEVEL GAGE - FRONT MOUNT WITH PIPE ADAPTERS

4/06 BULLETIN F327-7

ISO9001:2000 CERTIFIED