

# LUBE SIGHT CHECK - PRESS FIT WITH REFLECTOR

**LDI INDUSTRIES'** press fit sight plugs provide an economical method for quick, visual inspection of fluid in gear cases, reservoirs and tanks. Sight is removable for cleaning or replacement. Polycarb offers greatest resistance to damage while glass offers the widest range of chemical resistance.

**CAUTION:** Scratched glass significantly reduces pressure rating.

## STANDARD MATERIALS:

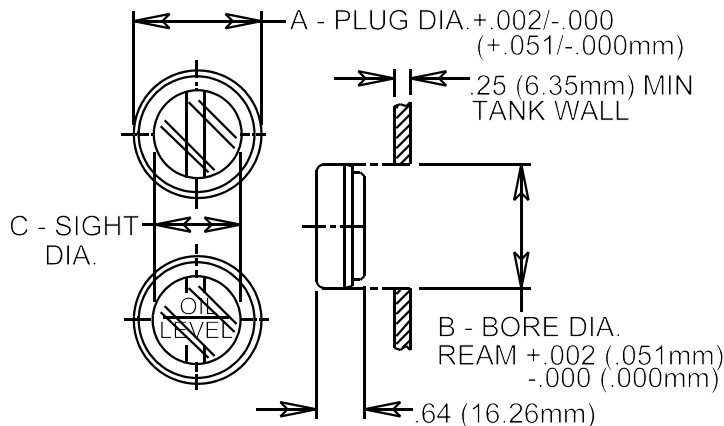
- Glass or Polycarbonate sight
- Aluminum body
- Buna N seals - other seal material is available - please specify.

## OPERATING CONDITIONS:

- Maximum working temperature up to 180°F (82.2°C) For applications requiring maximum working temperature over 180°F (82.2°C) please consult factory.
- Maximum working pressure up to 25 PSI (172.4kPa) at 69°F (20.5°C)

## MODIFICATIONS AVAILABLE MADE TO ORDER - CONSULT OUR FACTORY. (MINIMUM ORDER MAY BE REQUIRED)

SUFFIX R = REFLECTOR  
 SUFFIX RP = REFLECTOR, POLYCARB SIGHT  
 SUFFIX RGL = REFLECTOR, GLASS SIGHT, LEVEL LINE  
 SUFFIX RPL = REFLECTOR, POLYCARB SIGHT, LEVEL



NO FLUID LEVEL LINE	WITH FLUID LEVEL LINE	A INCHES (mm)	B INCHES (mm)	C INCHES (mm)
-	LSP501-07RPL	.878 (22.301)	.875 (22.225)	.56 (14.22)
-	LSP501-08RGL	1.003 (25.476)	1.000 (25.400)	.66 (16.76)
-	LSP501-10RPL	1.253 (31.826)	1.250 (31.750)	.75 (19.05)
-	LSP501-12RPL	1.503 (38.176)	1.500 (38.100)	1.00 (25.40)
LSP501-16RP	-	2.003 (50.876)	2.000 (50.800)	1.56 (39.62)



Lube Devices • Flodar • Hydra-Tool • Vescor  
 1864 Nagle Ave. P. O. Box 1810  
 Manitowoc, WI 54221-1810  
 Phone: (920) 682-6877 Fax: (920) 684-7210  
 E-MAIL: sales@ldi-industries.com WEBSITE: www.ldi-industries.com

LUBE SIGHT CHECK - PRESS FIT  
 WITH REFLECTOR

10/06 **BULLETIN F677-6**  
 ISO9001:2000 CERTIFIED