

NOTES:

1. INTERIOR SURFACES ARE COATED WITH OIL
2. ACCESSORIES WILL SHIP LOOSE (INSIDE RESERVOIR WITHIN A PLASTIC BAG)
3. DOWN PIPES ARE APPROX 1.50 OFF BOTTOM AND HAVE A MITERED END
4. TOLERANCE ON LOCATIONS OF ADDED OPTIONS IS +/- .12, TOLERANCE ON FLANGE PATTERNS AND TAPS IS +/- .06
5. SAE PORTS TO BE OUTSIDE TANK
6. STD SIGHT GAGE IS MOLDED NYLON (5.00) WITH METAL GUARD
7. ALL STD SEALS ARE NITRILE
8. ALL DIMENSIONS ARE IN INCHES AND FOR REFERENCE ONLY
9. SEE SHEET 2 FOR ADDITIONAL OPTIONS & LOCATIONS

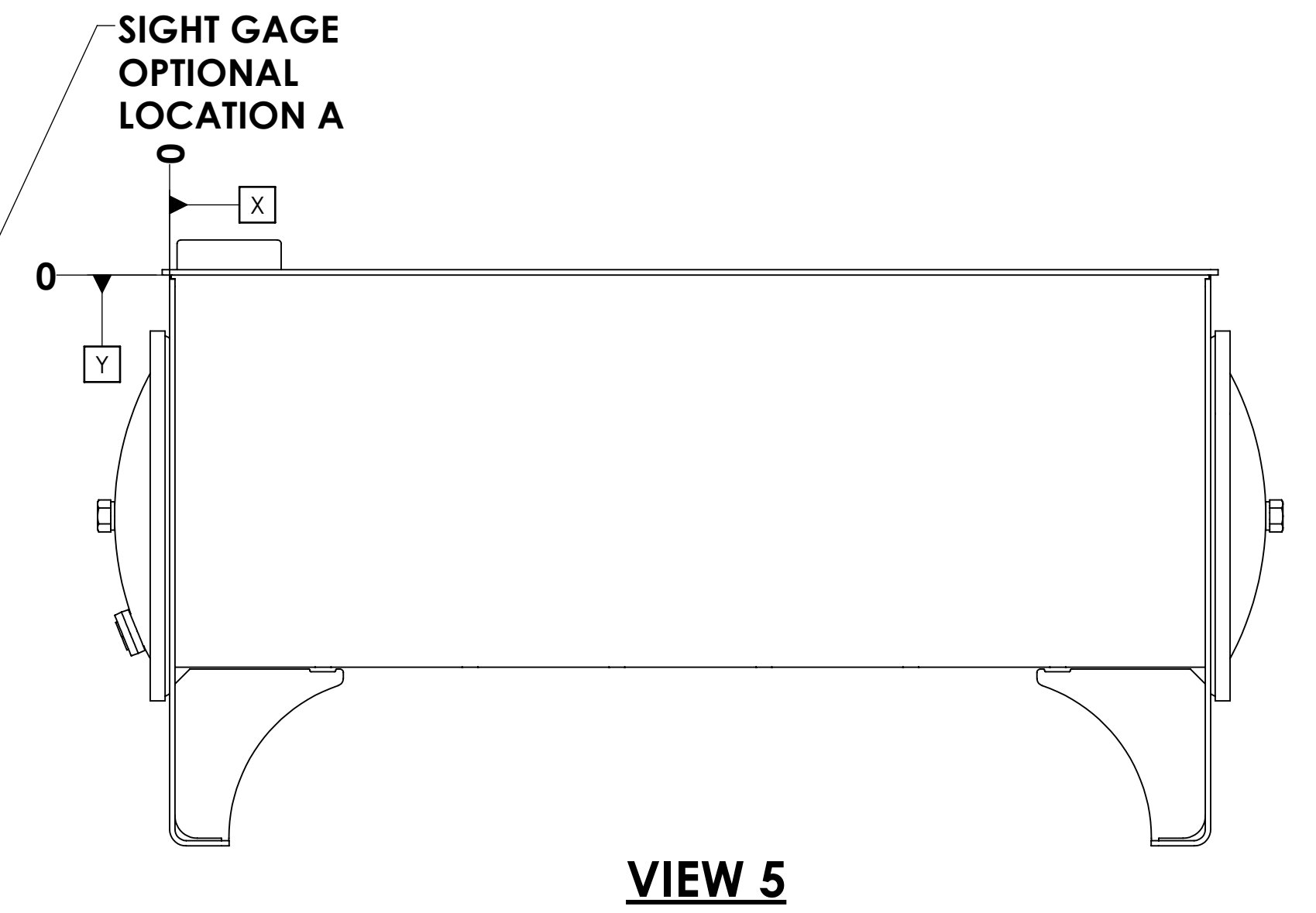
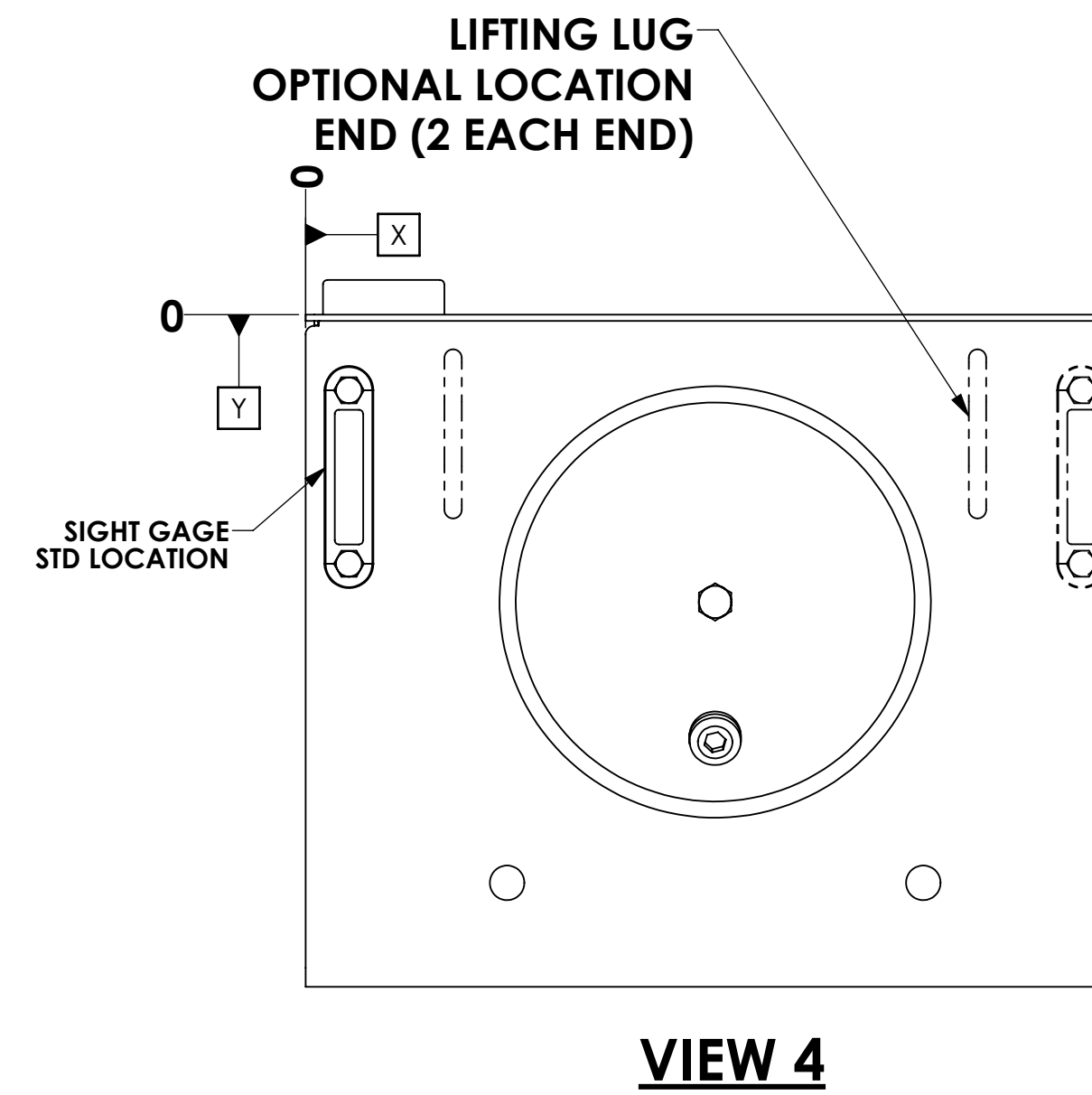
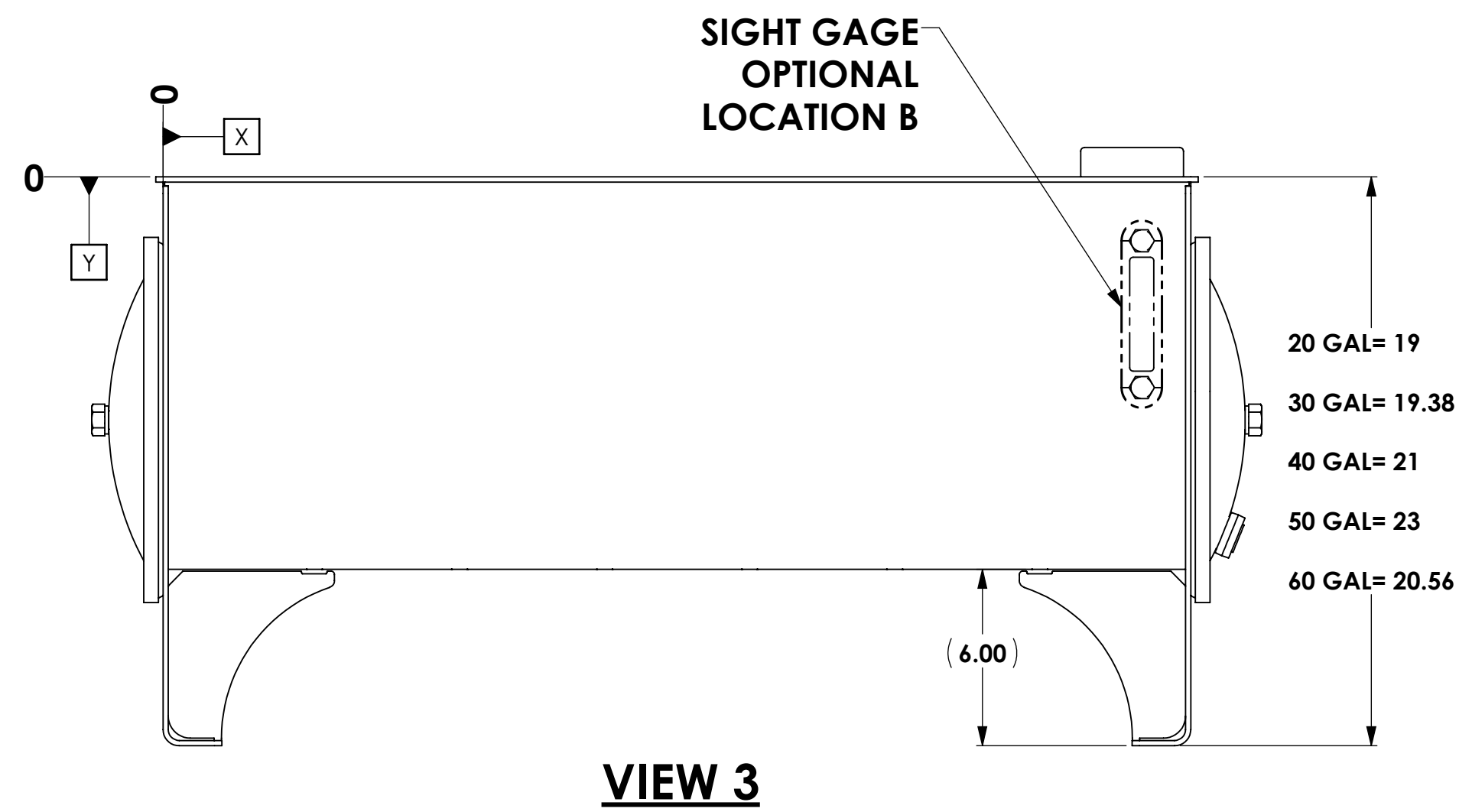
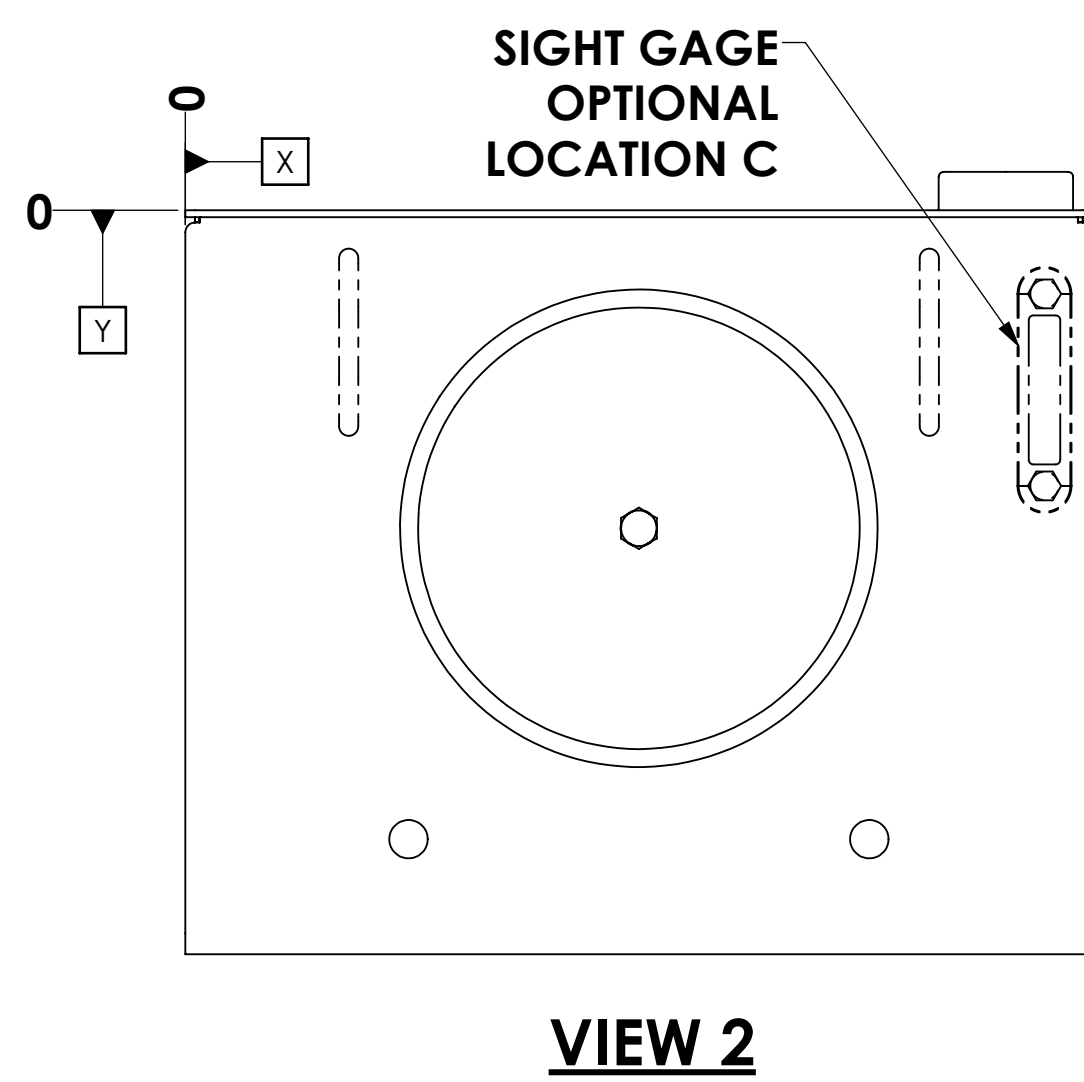
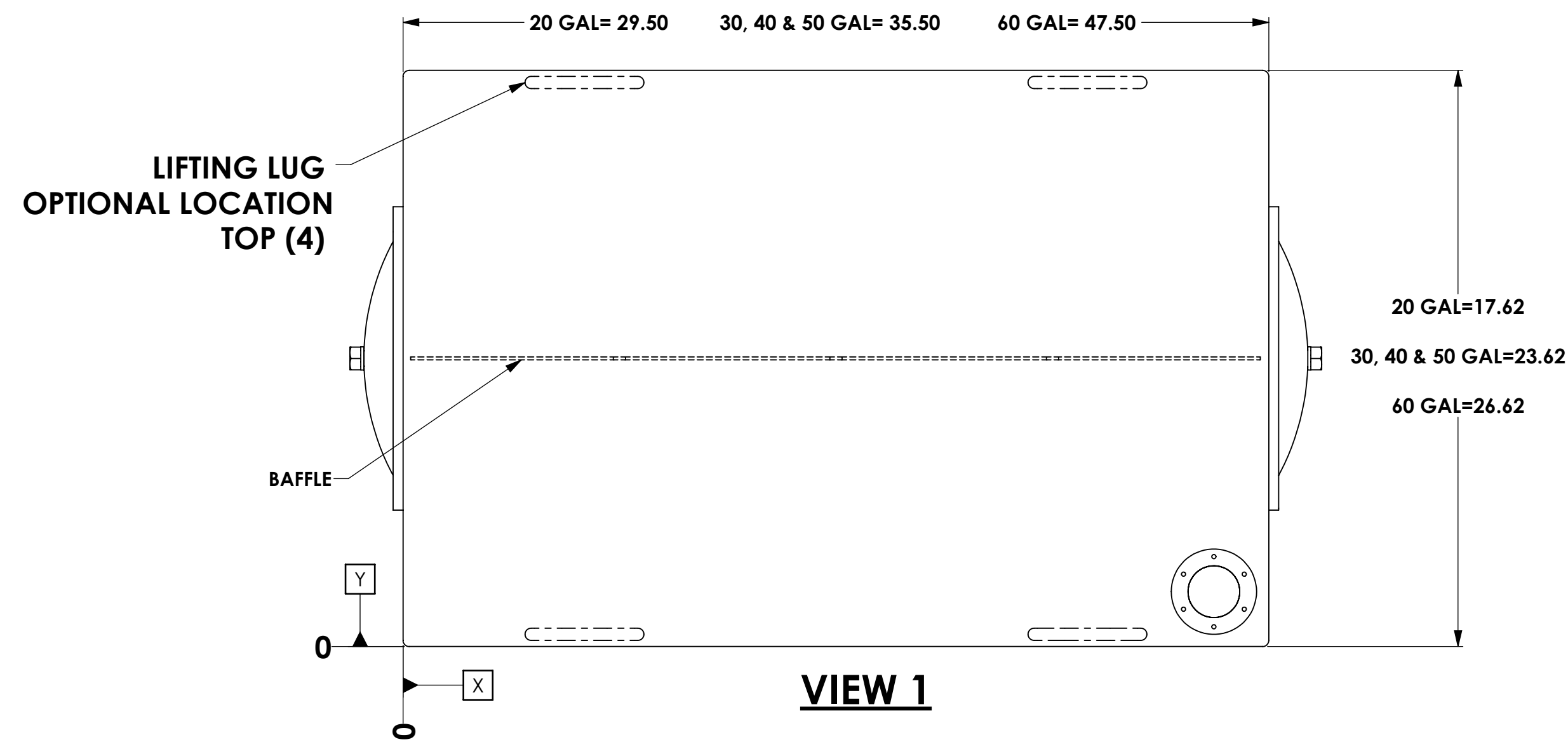
EZ MOD

Custom Reservoirs - *Fast*

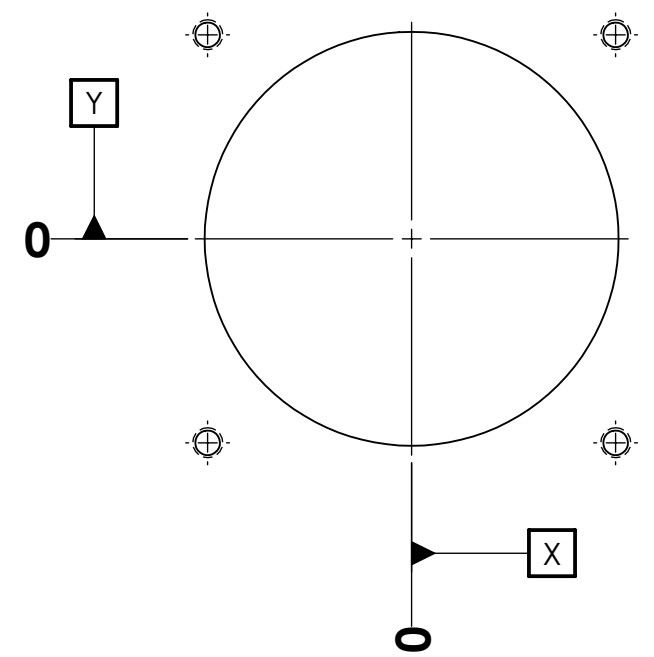
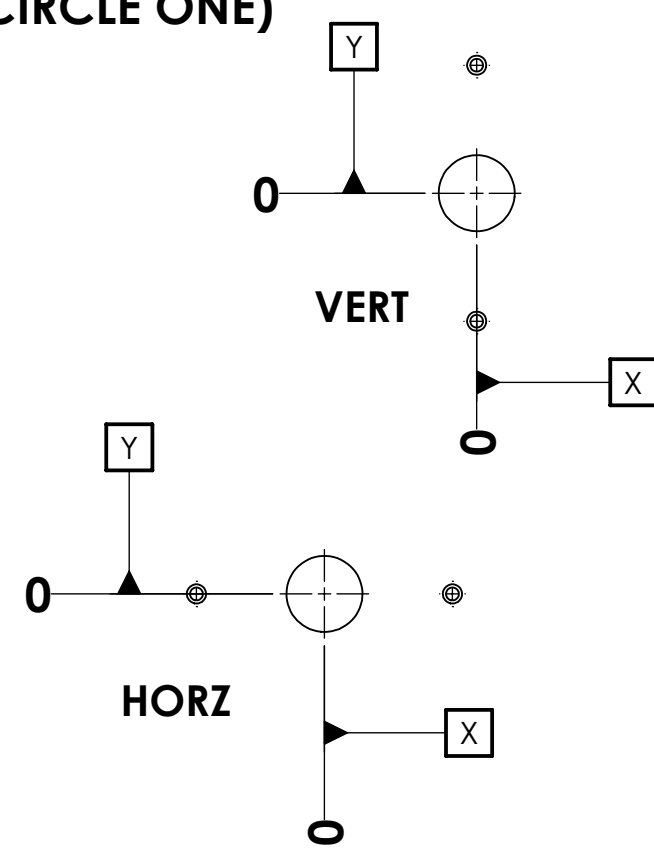
STYLE A SERIES

SPECIFY (CIRCLE)											
TANK SIZE (GAL)					QTY			FINISH			
20	30	40	50	60	1	2	3	UNPAINTED	GRAY PRIMER	GRAY PAINT	BLACK PAINT

GENERAL OPTIONS (CIRCLE)			
MOVE SIGHT GAGE LOCATION	A	B	C
CHANGE SIGHT GAGE TO ALUM MATERIAL	5.00	10.00	(CENTERLINE)
CHANGE SEAL MATERIAL	EPDM (5.00 ALUM ONLY)		
ADD LIFTING LUGS	TOP	ENDS	



APPROVED FOR PRODUCTION		NAME	DATE	TITLE:
DRAWN BY	DLH	08/10/2020		TEMPLATE_RFQ_STYLE_A_SERIES
CHECKED BY	-	-		
APPROVED BY	REVISED BY			ECH NO
COMPANY	THIS DOCUMENT CONTAINS INFORMATION PROPRIETARY TO LDI INDUSTRIES, INC. AND IS FURNISHED UPON THE EXPRESS CONDITION THAT THE INFORMATION CONTAINED HEREIN WILL NOT BE DISCLOSED TO ANY THIRD PARTY OR USED DIRECTLY OR INDIRECTLY IN ANY WAY DETRIMENTAL TO THE INTEREST OF LDI INDUSTRIES, INC.			SIZE
DATE	MANITOWOC, WI	HUNTLEY, IL		D
MATERIAL	STEEL	SIMILAR TO		DWG. NO.
FINISH	SEE CHART	ESTIMATE NO		REV
CUST NO	-	-		DO NOT SCALE DRAWING SCALE: 1:5 WT(LB): -

VIEW 1 MODIFICATION OPTIONS (CIRCLE)				LOCATION	
OPTIONS	NPT	SAE	SAE x NPT	X	Y
HALF CPLG	1/2 3/4 1 1-1/4	-8 -10 -12 -16			
	1-1/2 2 2-1/2 3	-20 -24 -32			
	1/2 3/4 1 1-1/4	-8 -10 -12 -16			
	1-1/2 2 2-1/2 3	-20 -24 -32			
FULL CPLG	1/2 3/4 1 1-1/4	-8 -10 -12 -16	-8x1/2 -10x3/4 -12x3/4 -16x1		
	1-1/2 2 2-1/2 3	-20 -24 -32	-20x1-1/4 -24x1-1/2 -32x2		
	1/2 3/4 1 1-1/4	-8 -10 -12 -16	-8x1/2 -10x3/4 -12x3/4 -16x1		
	1-1/2 2 2-1/2 3	-20 -24 -32	-20x1-1/4 -24x1-1/2 -32x2		
FULL CPLG WITH DOWNPIPE	1/2 3/4 1 1-1/4	-8 -10 -12 -16	-8x1/2 -10x3/4 -12x3/4 -16x1		
	1-1/2 2 2-1/2 3	-20 -24 -32	-20x1-1/4 -24x1-1/2 -32x2		
	1/2 3/4 1 1-1/4	-8 -10 -12 -16	-8x1/2 -10x3/4 -12x3/4 -16x1		
HOLE 1					
HOLE 2					
HOLE 3					
OPTIONS	PIPE OR TUBE (CIRCLE)	PART # (SPECIFY)	ORIENTATION	LOCATION	
SUCTION ¹ FLANGE CUTOUT (ONE ONLY)	PIPE: 1/2 3/4 1 1-1/4 1-1/2 2 2-1/2 3 3 3-1/2 4				
	TUBE: 3/8 1/2 5/8 3/4 1 1-1/4 1-1/2				
RETURN ¹ FLANGE CUTOUT (ONE ONLY)	PIPE: 1/2 3/4 1 1-1/4 1-1/2 2				
	TUBE: 3/8 1/2 5/8 3/4 1 1-1/4 1-1/2 2				

1. SUCTION AND RETURN FLANGES ARE SOLD SEPARATELY

VIEW 2 MODIFICATION OPTIONS (CIRCLE)				LOCATION	
OPTIONS	NPT	SAE	SAE x NPT	X	Y
HALF CPLG	1/2 3/4 1 1-1/4	-8 -10 -12 -16			
	1-1/2 2 2-1/2 3	-20 -24 -32			
FULL CPLG	1/2 3/4 1 1-1/4	-8 -10 -12 -16	-8x1/2 -10x3/4 -12x3/4 -16x1		
	1-1/2 2 2-1/2 3	-20 -24 -32	-20x1-1/4 -24x1-1/2 -32x2		
	1/2 3/4 1 1-1/4	-8 -10 -12 -16	-8x1/2 -10x3/4 -12x3/4 -16x1		
	1-1/2 2 2-1/2 3	-20 -24 -32	-20x1-1/4 -24x1-1/2 -32x2		
FULL CPLG WITH DOWNPIPE	1/2 3/4 1 1-1/4	-8 -10 -12 -16	-8x1/2 -10x3/4 -12x3/4 -16x1		
	1-1/2 2 2-1/2 3	-20 -24 -32	-20x1-1/4 -24x1-1/2 -32x2		
HOLE 1					
HOLE 2					
VIEW 3 MODIFICATION OPTIONS (CIRCLE)				LOCATION	
OPTIONS	NPT	SAE	SAE x NPT	X	Y
HALF CPLG	1/2 3/4 1 1-1/4	-8 -10 -12 -16			
	1-1/2 2 2-1/2 3	-20 -24 -32			
	1/2 3/4 1 1-1/4	-8 -10 -12 -16			
FULL CPLG	1/2 3/4 1 1-1/4	-8 -10 -12 -16	-8x1/2 -10x3/4 -12x3/4 -16x1		
	1-1/2 2 2-1/2 3	-20 -24 -32	-20x1-1/4 -24x1-1/2 -32x2		
	1/2 3/4 1 1-1/4	-8 -10 -12 -16	-8x1/2 -10x3/4 -12x3/4 -16x1		
	1-1/2 2 2-1/2 3	-20 -24 -32	-20x1-1/4 -24x1-1/2 -32x2		
FULL CPLG WITH DOWNPIPE	1/2 3/4 1 1-1/4	-8 -10 -12 -16	-8x1/2 -10x3/4 -12x3/4 -16x1		
	1-1/2 2 2-1/2 3	-20 -24 -32	-20x1-1/4 -24x1-1/2 -32x2		
HOLE 1					
HOLE 2					
VIEW 4 MODIFICATION OPTIONS (CIRCLE)				LOCATION	
OPTIONS	NPT	SAE	SAE x NPT	X	Y
HALF CPLG	1/2 3/4 1 1-1/4	-8 -10 -12 -16			
	1-1/2 2 2-1/2 3	-20 -24 -32			
	1/2 3/4 1 1-1/4	-8 -10 -12 -16			
FULL CPLG	1/2 3/4 1 1-1/4	-8 -10 -12 -16	-8x1/2 -10x3/4 -12x3/4 -16x1		
	1-1/2 2 2-1/2 3	-20 -24 -32	-20x1-1/4 -24x1-1/2 -32x2		
	1/2 3/4 1 1-1/4	-8 -10 -12 -16	-8x1/2 -10x3/4 -12x3/4 -16x1		
	1-1/2 2 2-1/2 3	-20 -24 -32	-20x1-1/4 -24x1-1/2 -32x2		
FULL CPLG WITH DOWNPIPE	1/2 3/4 1 1-1/4	-8 -10 -12 -16	-8x1/2 -10x3/4 -12x3/4 -16x1		
	1-1/2 2 2-1/2 3	-20 -24 -32	-20x1-1/4 -24x1-1/2 -32x2		
HOLE 1					
HOLE 2					
VIEW 5 MODIFICATION OPTIONS (CIRCLE)				LOCATION	
OPTIONS	NPT	SAE	SAE x NPT	X	Y
HALF CPLG	1/2 3/4 1 1-1/4	-8 -10 -12 -16			
	1-1/2 2 2-1/2 3	-20 -24 -32			
	1/2 3/4 1 1-1/4	-8 -10 -12 -16			
FULL CPLG	1/2 3/4 1 1-1/4	-8 -10 -12 -16	-8x1/2 -10x3/4 -12x3/4 -16x1		
	1-1/2 2 2-1/2 3	-20 -24 -32	-20x1-1/4 -24x1-1/2 -32x2		
	1/2 3/4 1 1-1/4	-8 -10 -12 -16	-8x1/2 -10x3/4 -12x3/4 -16x1		
	1-1/2 2 2-1/2 3	-20 -24 -32	-20x1-1/4 -24x1-1/2 -32x2		
FULL CPLG WITH DOWNPIPE	1/2 3/4 1 1-1/4	-8 -10 -12 -16	-8x1/2 -10x3/4 -12x3/4 -16x1		
	1-1/2 2 2-1/2 3	-20 -24 -32	-20x1-1/4 -24x1-1/2 -32x2		
HOLE 1					
HOLE 2					