

NOTES:

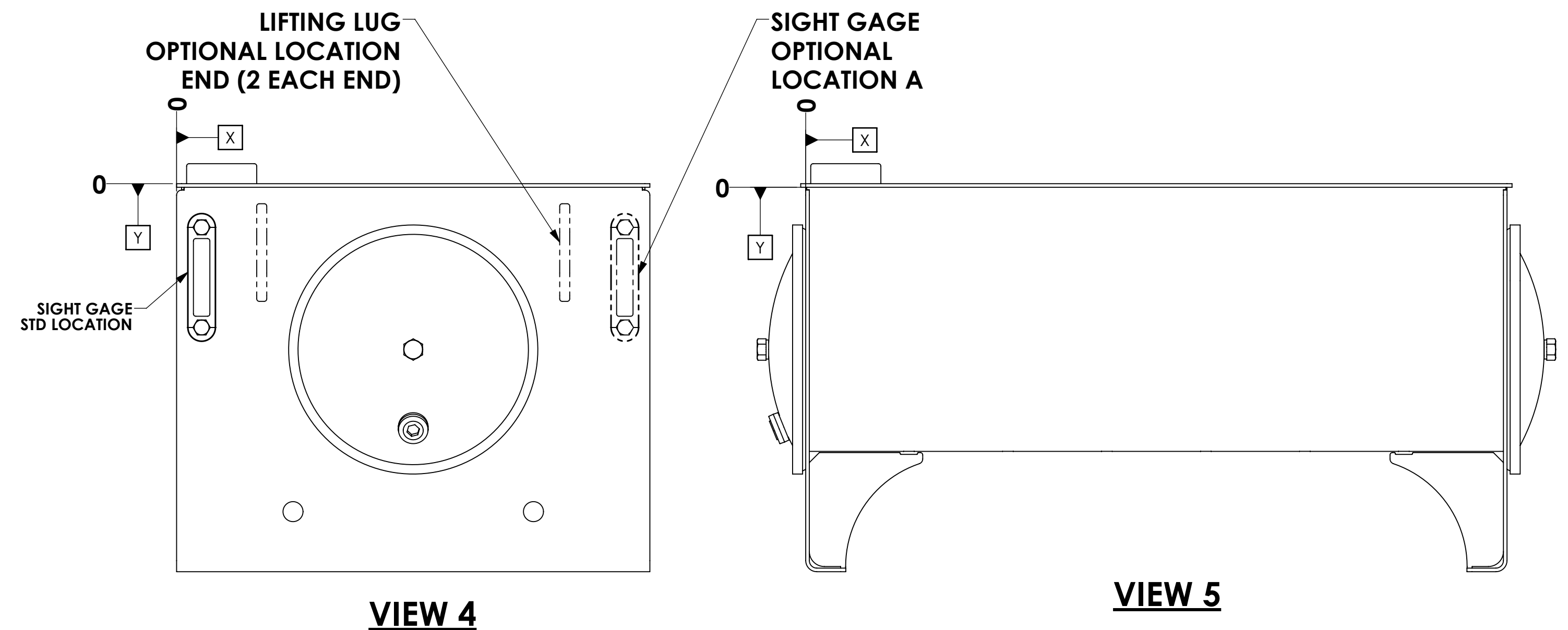
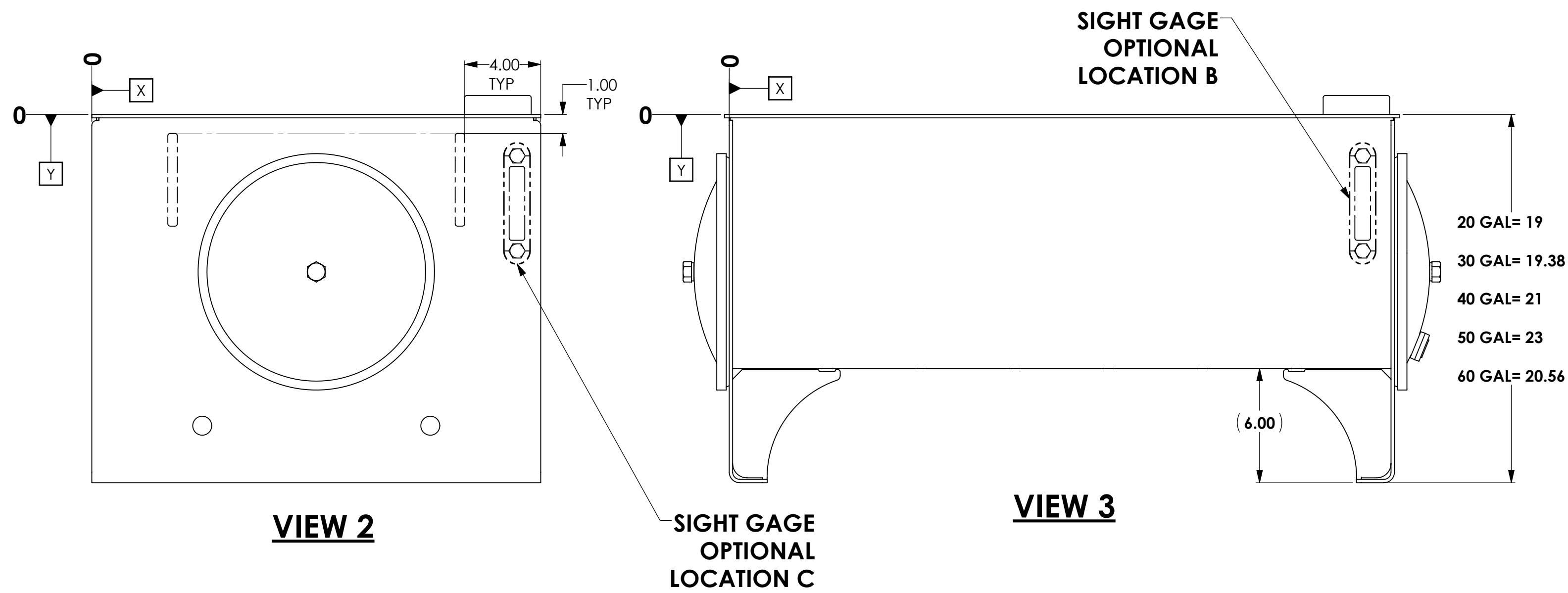
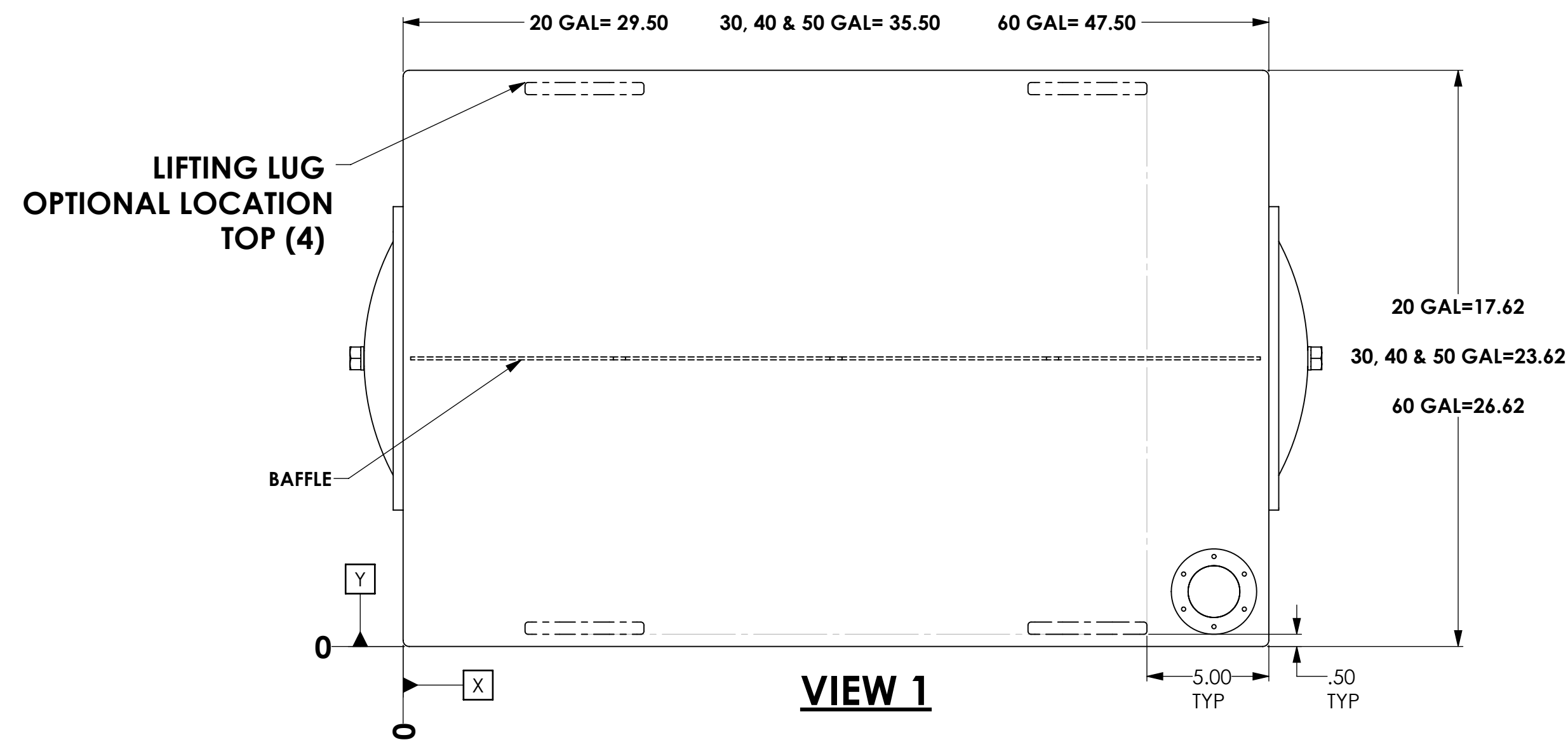
1. INTERIOR SURFACES ARE COATED WITH OIL
2. ACCESSORIES WILL SHIP LOOSE (INSIDE RESERVOIR WITHIN A PLASTIC BAG)
3. DOWN PIPES ARE APPROX 1.50 OFF BOTTOM AND HAVE A MITERED END
4. TOLERANCE ON LOCATIONS OF ADDED OPTIONS IS +/- .12, TOLERANCE ON FLANGE PATTERNS AND TAPS IS +/- .06
5. SAE PORTS TO BE OUTSIDE TANK
6. STD SIGHT GAGE IS MOLDED NYLON (5.00) WITH METAL GUARD
7. ALL STD SEALS ARE NITRILE
8. ALL DIMENSIONS ARE IN INCHES AND FOR REFERENCE ONLY
9. SEE SHEET 2 FOR ADDITIONAL OPTIONS & LOCATIONS



# STYLE A SERIES

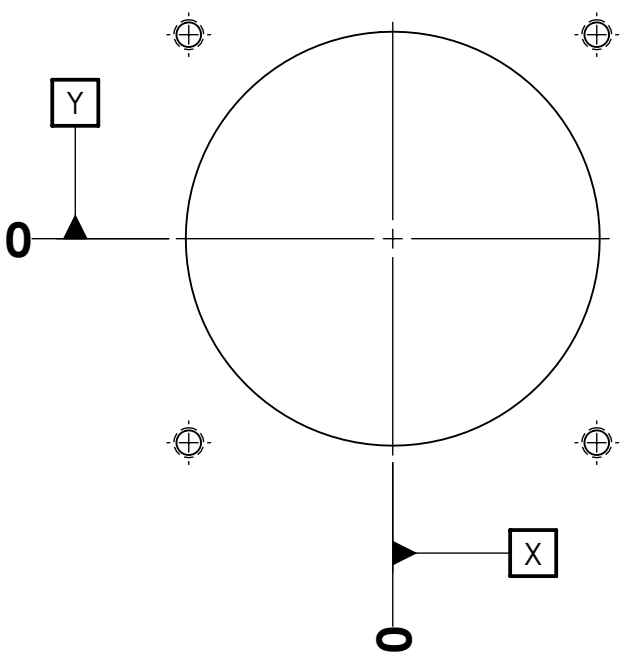
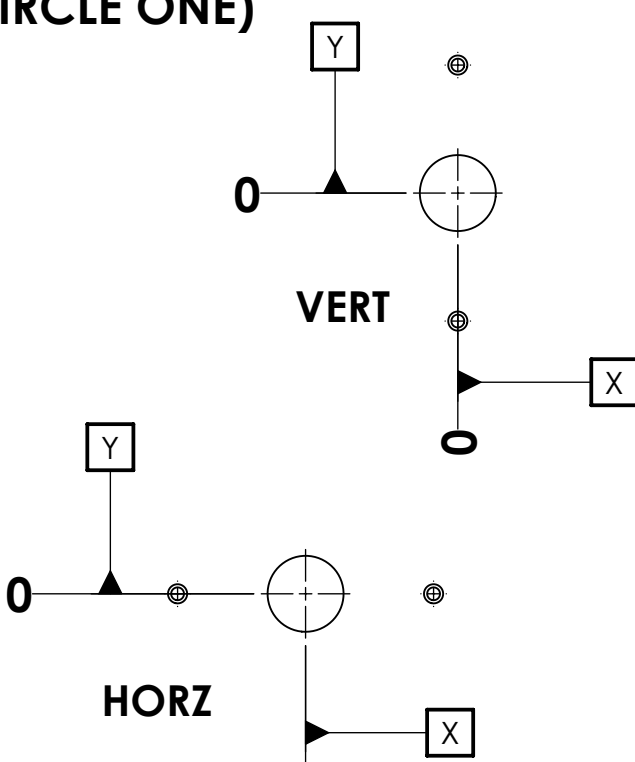
SPECIFY (CIRCLE)											
TANK SIZE (GAL)					QTY			FINISH			
20	30	40	50	60	1	2	3	UNPAINTED	GRAY PRIMER	GRAY PAINT	BLACK PAINT

GENERAL OPTIONS (CIRCLE)			
MOVE SIGHT GAGE LOCATION	A	B	C
CHANGE SIGHT GAGE TO ALUM MATERIAL	5.00	10.00	(CENTERLINE)
CHANGE SEAL MATERIAL	EPDM (5.00 ALUM ONLY)		
ADD LIFTING LUGS	TOP	ENDS	



APPROVED FOR PRODUCTION	NAME	DATE	TITLE:
	DLH	08/10/2020	TEMPLATE_RFQ_STYLE_A_SERIES
REVISOR	CHECKED BY	DATE	REV
COMPANY	MANITOWOC, WI	HUNTLEY, IL	ECH NO
MATERIAL	STEEL	SIMILAR TO	SIZE DWG. NO.
FINISH	SEE CHART	ESTIMATE NO	SCALE: 1:5
CUST NO			WT(LB): -



VIEW 1 MODIFICATION OPTIONS (CIRCLE)				LOCATION	
OPTIONS	NPT	SAE	SAE x NPT	X	Y
HALF CPLG	1/2 3/4 1 1-1/4	-8 -10 -12 -16			
	1-1/2 2 2-1/2 3	-20 -24 -32			
	1/2 3/4 1 1-1/4	-8 -10 -12 -16			
	1-1/2 2 2-1/2 3	-20 -24 -32			
FULL CPLG	1/2 3/4 1 1-1/4	-8 -10 -12 -16	-8x1/2 -10x3/4 -12x3/4 -16x1		
	1-1/2 2 2-1/2 3	-20 -24 -32	-20x1-1/4 -24x1-1/2 -32x2		
	1/2 3/4 1 1-1/4	-8 -10 -12 -16	-8x1/2 -10x3/4 -12x3/4 -16x1		
	1-1/2 2 2-1/2 3	-20 -24 -32	-20x1-1/4 -24x1-1/2 -32x2		
FULL CPLG WITH DOWNPIPE	1/2 3/4 1 1-1/4	-8 -10 -12 -16	-8x1/2 -10x3/4 -12x3/4 -16x1		
	1-1/2 2 2-1/2 3	-20 -24 -32	-20x1-1/4 -24x1-1/2 -32x2		
	1/2 3/4 1 1-1/4	-8 -10 -12 -16	-8x1/2 -10x3/4 -12x3/4 -16x1		
HOLE 1					
HOLE 2					
HOLE 3					
OPTIONS	PIPE OR TUBE (CIRCLE)	PART # (SPECIFY)	ORIENTATION	LOCATION	
SUCTION <sup>1</sup> FLANGE CUTOUT (ONE ONLY)	PIPE: 1/2 3/4 1 1-1/4 1-1/2 2 2-1/2 3 3-1/2 4			X	Y
	TUBE: 3/8 1/2 5/8 3/4 1 1-1/4 1-1/2				
RETURN <sup>1</sup> FLANGE CUTOUT (ONE ONLY)	PIPE: 1/2 3/4 1 1-1/4 1-1/2 2			X	Y
	TUBE: 3/8 1/2 5/8 3/4 1 1-1/4 1-1/2 2				

1. SUCTION AND RETURN FLANGES ARE SOLD SEPARATELY

VIEW 2 MODIFICATION OPTIONS (CIRCLE)				LOCATION	
OPTIONS	NPT	SAE	SAE x NPT	X	Y
HALF CPLG	1/2 3/4 1 1-1/4	-8 -10 -12 -16			
	1-1/2 2 2-1/2 3	-20 -24 -32			
FULL CPLG	1/2 3/4 1 1-1/4	-8 -10 -12 -16	-8x1/2 -10x3/4 -12x3/4 -16x1		
	1-1/2 2 2-1/2 3	-20 -24 -32	-20x1-1/4 -24x1-1/2 -32x2		
	1/2 3/4 1 1-1/4	-8 -10 -12 -16	-8x1/2 -10x3/4 -12x3/4 -16x1		
	1-1/2 2 2-1/2 3	-20 -24 -32	-20x1-1/4 -24x1-1/2 -32x2		
FULL CPLG WITH DOWNPIPE	1/2 3/4 1 1-1/4	-8 -10 -12 -16	-8x1/2 -10x3/4 -12x3/4 -16x1		
	1-1/2 2 2-1/2 3	-20 -24 -32	-20x1-1/4 -24x1-1/2 -32x2		
HOLE 1					
HOLE 2					
VIEW 3 MODIFICATION OPTIONS (CIRCLE)				LOCATION	
OPTIONS	NPT	SAE	SAE x NPT	X	Y
HALF CPLG	1/2 3/4 1 1-1/4	-8 -10 -12 -16			
	1-1/2 2 2-1/2 3	-20 -24 -32			
	1/2 3/4 1 1-1/4	-8 -10 -12 -16			
FULL CPLG	1/2 3/4 1 1-1/4	-8 -10 -12 -16	-8x1/2 -10x3/4 -12x3/4 -16x1		
	1-1/2 2 2-1/2 3	-20 -24 -32	-20x1-1/4 -24x1-1/2 -32x2		
	1/2 3/4 1 1-1/4	-8 -10 -12 -16	-8x1/2 -10x3/4 -12x3/4 -16x1		
	1-1/2 2 2-1/2 3	-20 -24 -32	-20x1-1/4 -24x1-1/2 -32x2		
FULL CPLG WITH DOWNPIPE	1/2 3/4 1 1-1/4	-8 -10 -12 -16	-8x1/2 -10x3/4 -12x3/4 -16x1		
	1-1/2 2 2-1/2 3	-20 -24 -32	-20x1-1/4 -24x1-1/2 -32x2		
HOLE 1					
HOLE 2					
VIEW 4 MODIFICATION OPTIONS (CIRCLE)				LOCATION	
OPTIONS	NPT	SAE	SAE x NPT	X	Y
HALF CPLG	1/2 3/4 1 1-1/4	-8 -10 -12 -16			
	1-1/2 2 2-1/2 3	-20 -24 -32			
	1/2 3/4 1 1-1/4	-8 -10 -12 -16			
FULL CPLG	1/2 3/4 1 1-1/4	-8 -10 -12 -16	-8x1/2 -10x3/4 -12x3/4 -16x1		
	1-1/2 2 2-1/2 3	-20 -24 -32	-20x1-1/4 -24x1-1/2 -32x2		
	1/2 3/4 1 1-1/4	-8 -10 -12 -16	-8x1/2 -10x3/4 -12x3/4 -16x1		
	1-1/2 2 2-1/2 3	-20 -24 -32	-20x1-1/4 -24x1-1/2 -32x2		
FULL CPLG WITH DOWNPIPE	1/2 3/4 1 1-1/4	-8 -10 -12 -16	-8x1/2 -10x3/4 -12x3/4 -16x1		
	1-1/2 2 2-1/2 3	-20 -24 -32	-20x1-1/4 -24x1-1/2 -32x2		
HOLE 1					
HOLE 2					
VIEW 5 MODIFICATION OPTIONS (CIRCLE)				LOCATION	
OPTIONS	NPT	SAE	SAE x NPT	X	Y
HALF CPLG	1/2 3/4 1 1-1/4	-8 -10 -12 -16			
	1-1/2 2 2-1/2 3	-20 -24 -32			
	1/2 3/4 1 1-1/4	-8 -10 -12 -16			
FULL CPLG	1/2 3/4 1 1-1/4	-8 -10 -12 -16	-8x1/2 -10x3/4 -12x3/4 -16x1		
	1-1/2 2 2-1/2 3	-20 -24 -32	-20x1-1/4 -24x1-1/2 -32x2		
	1/2 3/4 1 1-1/4	-8 -10 -12 -16	-8x1/2 -10x3/4 -12x3/4 -16x1		
	1-1/2 2 2-1/2 3	-20 -24 -32	-20x1-1/4 -24x1-1/2 -32x2		
FULL CPLG WITH DOWNPIPE	1/2 3/4 1 1-1/4	-8 -10 -12 -16	-8x1/2 -10x3/4 -12x3/4 -16x1		
	1-1/2 2 2-1/2 3	-20 -24 -32	-20x1-1/4 -24x1-1/2 -32x2		
HOLE 1					
HOLE 2					