

FLEXIBLE SHAFT COUPLINGS

FLEXIBLE JAW - SPIDER PERFORMANCE DATA

Four types of elastomer designs and materials are offered to allow for flexibility in addressing specific application requirements.

Standard Materials:

- SOX (NBR) Rubber (Black) - Nitrile Rubber
 - Considered the standard and most economical for jaw coupling spiders
 - Offers the best combination of temperature and chemical resistance, misalignment, and dampening ability
 - Only material suitable for reciprocating engine applications
 - 80A Shore Hardness except L035=60A
 - Temperature Range - 40° F to 212° F (-40° C to 100° C)
 - Resembles natural rubber in resilience and elasticity
 - Also applies to SXB Cushions
- Urethane (Blue)
 - Greater torque capability than NBR (1.5 times), provides less dampening effect and operates in a smaller temperature range
 - Good resistance to oil and chemicals
 - Not recommended for cyclic or start/stop applications
 - L050 to L110 Shore Hardness 55D, L150 to L225 Shore Hardness 90-95A
 - Temperature Range -30° F to 160° F (-34° C to 71° C)
- Hytrel (Tan)
 - Flexible elastomer designed for high torque and high temperature operations
 - Excellent resistance to oil and chemicals
 - Not recommended for cyclic or start/stop applications
 - 55D Shore Hardness
 - Temperature Range -60° F to 250° F (-51° C to 121° C)
- Bronze
 - Rigid, porous oil-impregnated metal insert exclusively for low speed (max 250 RPM) applications requiring high torque capabilities
 - Not affected by extreme temperatures, water, oil, or dirt
 - Temperature Range -40° F to 450° F (-40° C to 232° C)

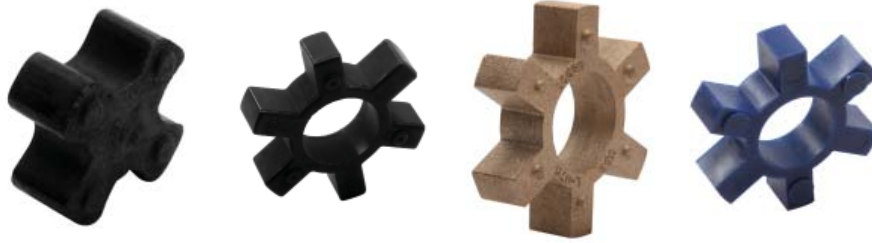
Standard Styles:

- Solid Center
 - Commonly used when shafts of the driver and driven equipment can be kept separate by a standard gap
- Open Center
 - Allows for the shafts of the driver and driven to be positioned within a short distance
 - Offer shaft positioning flexibility but have a lower RPM capacity (1,750 RPM Max for NBR, 3,600 Max for Urethane/Hytrel)
- Snap Wrap Flexible
 - Design allows for easy removal of the spider without moving the hubs
 - Allows for close shaft separation all the way up to the hubs maximum bore
 - Maximum RPM is 1,750 RPM with the retaining ring, but if used with the LC Type (with collar) the normal RPM rating of the coupling applies
 - Style is available in NBR and Urethane only, and in limited sizes
- Cushions
 - Used exclusively for the C Type couplings
 - Load cushions are held in place radially by a steel collar which is attached to one of the hubs



FLEXIBLE SHAFT COUPLINGS

FLEXIBLE JAW - SPIDERS & CUSHIONS



Spiders for L Type Hubs													
Type	L035	L050	L070	L075	L090	L095	L099	L100	L110	L150	L190	L225	L276
SOX (NBR) (solid)	10118	10194	10406	10621	11070	11070	11494	11494	11724	12001	12274	12409	
SOX (NBR) (open center)			10393	10620	10968	10968	11492	11492	11711	37880	37881	12406	12612
Urethane (solid)		37786	10395										
Urethane (open center)			10411	10626	11075	11075	11499	11499	11729	12006	12280	12417	
Hytrel (solid)		25307							11717	11993	12265	12401	
Hytrel (open center)			25308	25309	25310	25310	11486	11486	38097	38098	38099	12400	
Bronze (open center)		10498	10409	10624	11073	11073	11497	11497	11727	12004	12277	34517	25767
Snap Wrap w/ring					24669	24669	24670	24670	24671	24672	24673		
Snap Wrap w/o ring					11071	11071	11495	11495	11725	12002	12275		
Snap Wrap Urethane (Solid Ring)							41170	41170	41171		28284	26093	

Spiders for AL Type Hubs									
Type	AL050	AL070	AL075	AL090	AL095	AL099	AL100	AL110	AL150
SOX (NBR) (solid)	10194	10406	10621	11070	11070	11494	11494	11724	18027
SOX (NBR) (open center)		10393	10620	10968	10968	11492	11492	11711	
Urethane (solid)	37786	10395							
Urethane (open center)		10411	10626	11075	11075	11499	11499	11729	
Hytrel (solid)	25307							11717	
Hytrel (open center)		25308	25309	25310	25310	11486	11486	38097	
Bronze (open center)	10198	10409	10624	11073	11073	11497	11497	11727	
Snap Wrap w/ring				24669	24669	24670	24670	24671	
Snap Wrap w/o ring				11071	11071	11495	11495	11725	



Cushions and Collars for C Type Hubs							
Size	→	C226	C276	C280	C285	C295	C2955
No. of Cushions	→	6	6	6	6	6	10
SXB(NBR) cushion set		14547	14633	14712	14771	14805	14856
HYTREL cushion set		27529	14637	14716	14774	14808	14859
BRONZE cushion set		14545				51914	51915
COLLAR with hardware		40122	40123	40124	40292	40293	40293

Dimensions and specifications are subject to change without notice. Not all items are Made-To-Stock, contact us for availability.

07/15

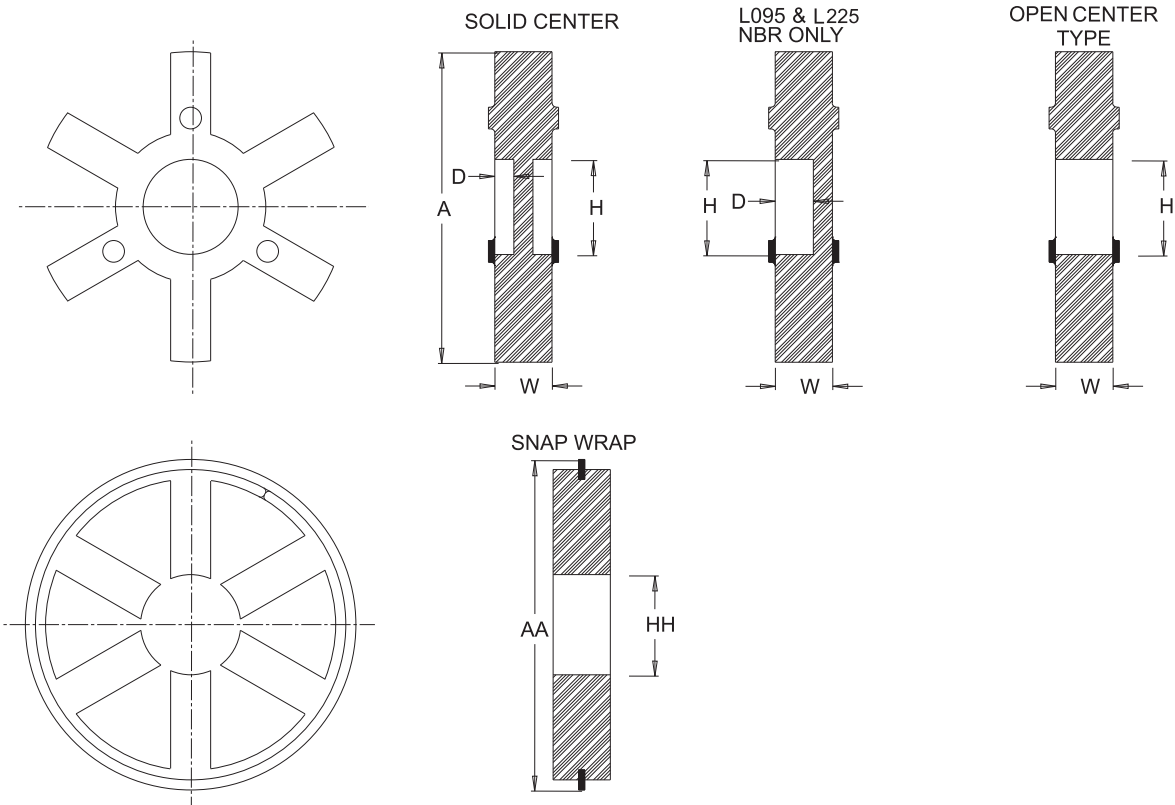
Ph : 920-682-6877
Fx : 920-684-7210



sales@ldi-industries.com
www.ldi-industries.com

FLEXIBLE SHAFT COUPLINGS

FLEXIBLE JAW - SPIDERS & CUSHIONS DIMENSIONS



Solid Center Spiders						
Size	Material Available				Dimensions	
	SOX NBR	URE	HYT	BRZ	A	D H
L035	10118				.062	
L050	10194	37786	25307		1.06	
L070	10406				1.38	
L075	10621				1.75	
L090	11070				2.12	.18 .87
L095	11070				2.12	.18 .87
L099	11494				2.53	.25 1.03
L100	11494				2.53	.25 1.03
L110	11724		11717		3.31	NBR .25 HYT .18 1.18
L150	12001		11993		3.75	NBR .31 HYT .21 1.25
L190	12274		12265		4.50	NBR .31 HYT .18 1.38
L225	12409		12400		5.00	NBR .38 HYT .18 1.75
L276						

Open Center Spiders						
Size	Material Available				Dimensions	
	SOX NBR	URE	HYT	BRZ	A	H
L035						
L050				10498	1.06	.31
L070	10393	10395	25308	10409	1.38	.50
L075	10620	10626	25309	10624	1.75	.75
L090	10968	11075	25310	11073	2.12	.87
L095	10968	11075	25310	11073	2.12	.87
L099	11492	11499	11486	11497	2.53	1.03
L100	11492	11499	11486	11497	2.53	1.03
L110	11711	11729	38097	11727	3.31	1.18
L150	37880	12006	38098	12004	3.75	1.25
L190	37881	12280	38099	12274	4.50	1.38
L225	12406	12417	12401	34517	5.00	1.75
L276	12612		25767		6.18	1.75

Snap Wrap Spiders			
Size	SOX NBR	Dimens.	
		AA	HH
L035	N/A		
L050	N/A		
L070	N/A		
L075	N/A		
L090	24669	2.56	1.06
L095	24669	2.56	1.06
L099	24670	3.08	1.37
L100	24670	3.08	1.37
L110	24671	3.87	1.50
L150	24678	4.56	1.75
L190	24673	5.18	2.25
L225	URE	5.44	2.75
L276	N/A		

All	
Size	W
L035	.27
L050	.40
L070	.42
L075	.44
L090	.44
L095	.44
L099	.63
L100	.63
L110	.75
L150	.88
L190	.88
L225	.92
L276	1.50

Dimensions and specifications are subject to change without notice. Not all items are Made-To-Stock, contact us for availability.

02/14

Ph : 920-682-6877
Fx : 920-684-7210



sales@ldi-industries.com
www.ldi-industries.com

FLEXIBLE SHAFT COUPLINGS

FLEXIBLE JAW - L TYPE HUBS

The Flexible Jaw Coupling is the industry's largest variety of stock bore/keyway combinations. These couplings require no lubrication and provide highly reliable service for light, medium, and heavy duty electrical motor and internal combustion power transmission applications.

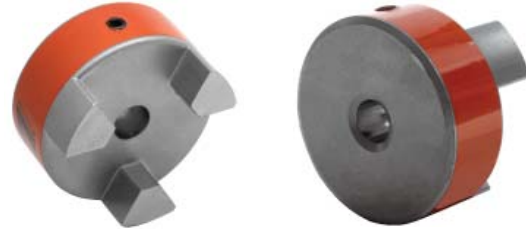
Standard Features:

- Industry's standard shaft coupling
- Accommodates for angular and parallel shaft misalignment
- No metal to metal contact
- Keyed inch/metric
- Without keyway inch/metric
- Splined bore
- Resistant to oil, dirt, sand, moisture, and grease
- Max Bore: 2.875 inches / 70 mm
- Max Torque: 12,500 in-lbs (1412Nm)

Standard Materials:

- Sintered Iron (L035 - L150)
- Cast Iron (L190-L276)

NOTE: A full L Type Coupling is comprised of two hubs and one elastomeric spider of the same size



L Type Inch Hubs Standard Bore and Keyway Chart Selection

Bore	Keyway	L035	L050	L070	L075	L090	L095	L099	L100	L110	L150	L190	L225	L276
1/8	No KW	10124												
3/16	No KW	10126												
1/4	No KW	10127	10206	10416	10680	10766								
1/4	1/8 x 1/16				35744									
5/16	No KW	10128	10207	10417	10681	26209								
3/8	No KW	24687	10208	10418	10682	10767								
3/8	3/32 x 3/64		46121	41985	37234	37235								
3/8	1/8 x 1/16		44136	48829	35745	37236								
7/16	No KW		10209	10419	10683	10768	11082	31297	11505					
7/16	3/32 x 3/64		44713	44007	28089	28877	27613	38198	37237					
7/16	1/8 x 1/16			44066	28875	28878	28879	38199	37238					
1/2	No KW		10210	10420	10684	10769	11083	11333	11506					
1/2	1/8 x 1/16		10211	10421	10685	26087	26088	11334	26089					
9/16	No KW		10212	52338	10686	24976	37239	11335	11508					
9/16	1/8 x 1/16		10213	10423	10687	28876	11084	38200	11509					
5/8	No KW		10214	24771	44322	46052	41911	44174	44291	11733	12101			
5/8	5/32 x 5/64			51104	37240	37241	37242	38201	37243	37244	37245			
5/8	3/16 x 3/32			10424	10688	10771	11085	11336	11510	26211	26212			
11/16	3/16 x 3/32			10425	10689	10772	11086	11337	11511	11734	12102			
3/4	No KW			46116	56140	54282	56887	11455	45212			12285	12422	
3/4	1/8 x 15/16			51719	35881	37246	37074	38202	37247	37248	37249	37250		
3/4	3/16 x 3/32			10426	10690	10773	11087	11338	11512	11735	12103	38468	35882	
13/16	3/16 x 3/32				10691	10774	11088	11339	11513	11736	12104	37252	37255	
7/8	No KW				56941			59063						12582
7/8	3/16 x 3/32				10692	10775	11089	11340	11514	11737	12105	12286	12423	12585
7/8	1/4 x 1/8					38188	35747	38203	35686	35749	35750	37256	35753	54883
15/16	1/4 x 1/8					32332	11090	11341	11515	11738	12106	12287	12424	
1	3/16 x 3/32					37257	37258	38204	37259	37260	37261		37263	
1	1/4 x 1/8					31296	11091	11342	11516	11739	12107	12288	12425	12586
1 1/16	1/4 x 1/8						11092	11343	11517	11740	12108	12289	12426	
1 1/8	1/4 x 1/8						11093	11344	11518	11741	12109	12290	12427	12587
1 3/16	1/4 x 1/8							11345	11519	11742	12110	12291	12428	
1 1/4	1/4 x 1/8								11520	11743	12111	12292	12429	12588
1 1/4	5/16 x 5/32								35748	35752	35751	37264	35754	12589
1 5/16	5/16 x 5/32								11521	11744	12112	12293	26090	
1 3/8	5/16 x 5/32								11522	11745	12113	12294	12430	12590
1 3/8	3/8 x 3/16								44348	37265	37266	37267	37268	46758
1 7/16	3/8 x 3/16									11746	12114	12295	12431	12591
1 1/2	5/16 x 5/32									37269	37270	37271	37272	

NOTE: All finished bore hubs are provided with one set screw as standard. Non-standard bores available, consult engineering.

Dimensions and specifications are subject to change without notice. Not all items are Made-To-Stock, contact us for availability.

02/14

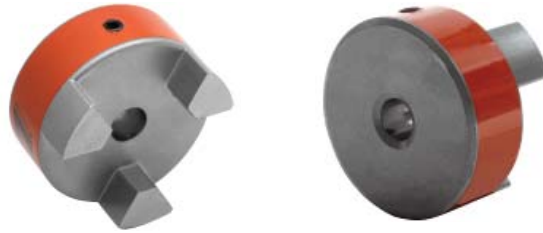
Ph : 920-682-6877
Fx : 920-684-7210



sales@ldi-industries.com
www.ldi-industries.com

FLEXIBLE SHAFT COUPLINGS

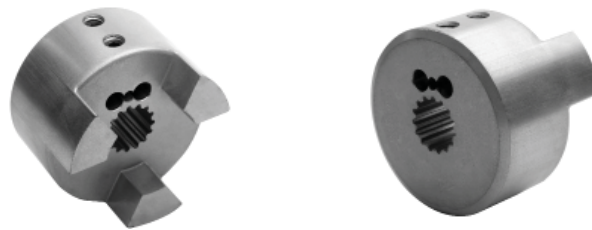
FLEXIBLE JAW - L TYPE HUBS (CONT'D)



L Type Inch Hubs Standard Bore and Keyway Chart Selection (cont'd)

Bore	Keyway	L035	L050	L070	L075	L090	L095	L099	L100	L110	L150	L190	L225	L276
1 1/2	3/8 x 3/16									11747	12115	12296	12432	12592
1 9/16	3/8 x 3/16									11748	12116	37273	12433	45689
1 5/8	3/8 x 3/16									11749	12117	12297	12434	12593
1 11/16	3/8 x 3/16										12118	12298	12435	60057
1 3/4	3/8 x 3/16										12119	12299	12436	12594
1 3/4	7/16 x 7/32										37274	37275	37276	48250
1 13/16	1/2 x 1/4										12120	12300	26091	
1 7/8	1/2 x 1/4										12121	12301	12437	12595
1 15/16	1/2 x 1/4											12302	12438	49762
2	1/2 x 1/4											12303	12439	12596
2 1/16	1/2 x 1/4											12304	26092	
2 1/8	1/2 x 1/4											12305	12440	12597
2 3/16	1/2 x 1/4												12441	12598
2 1/4	1/2 x 1/4												12442	12599
2 3/8	5/8 x 5/16												12443	12602
2 5/8	5/8 x 5/16												41809	12605
2 7/8	3/4 x 3/8													12607

NOTE: All finished bore hubs are provided with one set screw as standard. Non-standard bores available, consult engineering.



L Type Hub Spline Bore Chart

No. Teeth	Pitch	SAE	Shaft Diameters		Shaft Maj. Dia.	L090	L095	L099	L100	L110	L150	L190	L225	L276
			Major	Minor										
9	16/32	A	.651	.509	.625	38568	37900	38571	37904					
11	16/32		.776	.631	.750	38569	37901	38572	37905	37909	37917	37925		
13	16/32	B	.901	.754	.875	38570	37902	38573	37906	37910	37918	37926	37935	
13	8/16	D, E	1.798	1.506	1.750					37915	37923	37931	37940	38576
14	12/24	C	1.289	1.087	1.250					37912	37920	37928	37937	38577
15	16/32	BB	1.026	.877	1.000			38574	37907	37911	37919	37927	37936	38578
15	8/16	F	2.048	1.753	2.000							37933	37942	
21	16/32		1.401	1.250	1.375					37913	37921	37929	37938	
23	16/32		1.526	1.375	1.500					37914	37922	37930	37939	
27	16/32		1.776	1.625	1.750					37916	37924	37932	37941	38579

Dimensions and specifications are subject to change without notice. Not all items are Made-To-Stock, contact us for availability.

02/14

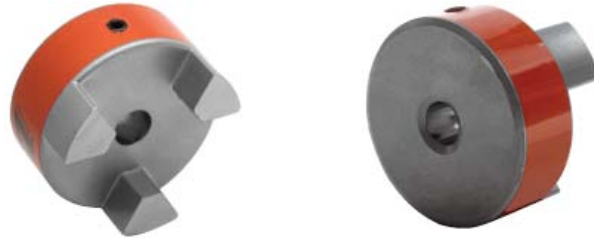
Ph : 920-682-6877
Fx : 920-684-7210



sales@ldi-industries.com
www.ldi-industries.com

FLEXIBLE SHAFT COUPLINGS

FLEXIBLE JAW - L TYPE HUBS (CONT'D)



L Type Metric Hubs Standard Bore and Keyway Chart Selection (mm)

Bore	Keyway	L035	L050	L070	L075	L090	L095	L099	L100	L110	L150	L190	L225	L276
4	No KW	41850												
5	No KW	47419	46214											
6	No KW	45872	50351											
7	No KW	60679	10215	58803										
8	No KW	55169	41460	46151		60945								
9	3 x 1.4		41313	56177	44298									
10	No KW		10216	41452	41456									
10	3 x 1.4		41450	49870	41457	52828								
11	4 x 1.8		41314	41453	50811		49424							
12	No KW		48510	51562		48276								
12	4 x 1.8		41315	41454	44153	44329	44832		55195					
14	No KW		58036	47505		41461	41465							
14	5 x 2.3		41316	41317	41321	51231	41466	60094	45101					
15	No KW		60708		10693		46561	52697	41469					
15	5 x 2.3		41451	41455	41458	52096	45778	46972	47123					
16	5 x 2.3		56176	41318	41322	49198	41325	52098	55534	52092	52471			
17	5 x 2.3			45333	49398		49704		56178	60067	60156			
18	6 x 2.8			59724	41884	46433	46626	44647	41926	44288				
19	No KW					10777				41471				
19	6 x 2.8			41319	41323	41462	41326	44157	41329	49700	48821	46717		
20	6 x 2.8				41459	41925	41467	47122	52093	41804	61218	61497		
22	6 x 2.8				58246	41968	44827	41959	44467	45214	44720			
24	8 x 3.3					41463	41327	41990	41330	48301	48182	59109		
25	8 x 3.3					41464	41468	45055	41470	41906	46751	52153		
28	No KW										56179	56182		
28	8 x 3.3						41328	50103	41331	41333	45679	52976		
30	8 x 3.3							47132	48317	45681	41738	44471	48982	
32	No KW										41472	41473	48319	56232
32	10 x 3.3								41332	41334	41873	45562	41849	41885
35	No KW										56180	56183	56184	
35	10 x 3.3								49925	45682	46562	58035	52197	
38	10 x 3.3									41335	41337	41474	49664	52961
40	12 x 3.3									45683	48318	48320	49605	59308
42	12 x 3.3									41336	41338	41475	47492	45609
45	14 x 3.8										45102	56017	52674	50292
48	No KW										56181	51995		
48	14 x 3.8										56227	48322	47569	61202
50	No KW											56228	56230	56233
50	14 x 3.8											44392	48797	45062
55	No KW											56229	56231	56234
55	16 x 4.3											47006	44089	56067
60	No KW												56185	56235
60	18 x 4.4												44598	56236
65	No KW												56185	56237
65	18 x 4.4												56544	50102
70	20 x 4.9													58268

NOTE: All finished bore hubs are provided with one set screw as standard. Non-standard bores available, consult engineering.

Dimensions and specifications are subject to change without notice. Not all items are Made-To-Stock, contact us for availability.

02/14

Ph : 920-682-6877
Fx : 920-684-7210



sales@ldi-industries.com
www.ldi-industries.com

FLEXIBLE SHAFT COUPLINGS

FLEXIBLE JAW COUPLINGS - PERFORMANCE DATA

Flexible Shaft Couplings - Performance Data									
Size	Elastomeric Member	Number of Jaws	Basic HP Ratings @ Varying RPM		Torque Rating		Bore		Maximum RPM 1000
			100	1800	in-lbs	Nm	inch	Nm	
L and AL TYPE									
L035	SOX (NBR)	2	.006	.10	3.5	.40	.375	9	31.0
L050/AL050	SOX (NBR)	2	.042	.75	26.3	2.97	.625	16	18.0
	Hytrel	2	.080	1.43	50.0	5.65	.625	16	18.0
L070/AL070	SOX (NBR)	2	.070	1.23	43.2	4.88	.750	19	14.0
	Hytrel	2	.180	3.26	114.0	12.88	.750	19	14.0
L075/AL075	SOX (NBR)	3	.140	2.57	90.0	10.17	.875	22	11.0
	Hytrel	3	.360	6.48	227.0	25.65	.875	22	11.0
L090/AL090	SOX (NBR)	3	.230	4.11	144.0	16.27	1.00	25	9.0
	Hytrel	3	.640	11.50	401.0	45.31	1.00	25	9.0
L095/AL095	SOX (NBR)	3	.310	5.50	194.0	21.92	1.12	28	9.0
	Hytrel	3	.890	16.00	561.0	63.38	1.12	28	9.0
L099/AL099	SOX (NBR)	3	.500	9.10	318.0	35.93	1.18	30	7.0
	Hytrel	3	1.260	22.60	792.0	89.48	1.18	30	7.0
L100/AL100	SOX (NBR)	3	.660	11.90	417.0	47.11	1.38	35	7.0
	Hytrel	3	1.800	32.40	1134.0	128.12	1.38	35	7.0
L110/AL110	SOX (NBR)	3	1.260	23.00	792.0	89.48	1.62	42	5.0
	Hytrel	3	3.600	65.00	2268.0	256.25	1.62	42	5.0
L150	SOX (NBR)	3	2.000	35.00	1240.0	140.10	1.88	48	5.0
	Hytrel	3	5.900	106.00	3708.0	418.95	1.88	48	5.0
AL150	SOX (NBR)	4	2.300	41.40	1450.0	163.63	1.88	48	5.0
L190	SOX (NBR)	3	2.700	49.00	1728.0	195.24	2.12	55	5.0
	Hytrel	3	7.400	134.00	4680.0	528.77	2.12	55	5.0
L225	SOX (NBR)	3	3.700	67.00	2340.0	264.38	2.62	65	4.2
	Hytrel	3	9.900	178.00	6228.0	703.67	2.62	65	4.2
L276	SOX (NBR)	3	7.500	135.00	4716.0	532.84	2.88	73	1.8
C TYPE									
C226	SXB (NBR)	3	4.700	85.00	2988.0	337.60	2.50	64	4.8
	Hytrel	3	9.400	170.00	5940.0	671.13	2.50	64	4.8
C276	SXB (NBR)	3	7.500	135.00	4716.0	532.84	2.88	73	4.2
	Hytrel	3	15.000	269.00	9432.0	1065.67	2.88	73	4.2
C280	SXB (NBR)	3	12.000	216.00	7560.0	254.17	3.00	76	3.5
	Hytrel	3	22.000	396.00	13866.0	1566.65	3.00	76	3.5
C285	SXB (NBR)	3	14.600	262.00	9182.0	1037.43	4.00	102	3.2
	Hytrel	3	26.000	476.00	16660.0	1882.33	4.00	102	3.2
C295	SXB (NBR)	3	18.000	324.00	11340.0	1281.25	3.50	89	2.3
	Hytrel	3	36.000	648.00	22680.0	2562.50	3.50	89	2.3
C2955	SXB (NBR)	5	30.000	540.00	18900.0	2135.42	4.00	102	2.3
	Hytrel	5	60.000	1080.00	37800.0	4270.83	4.00	102	2.3

Dimensions and specifications are subject to change without notice. Not all items are Made-To-Stock, contact us for availability.

02/14

Ph : 920-682-6877
 Fx : 920-684-7210

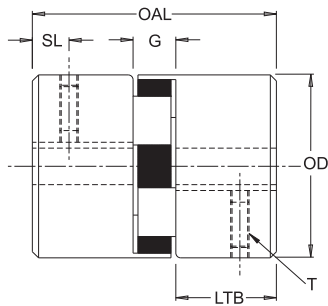


sales@ldi-industries.com
 www.ldi-industries.com

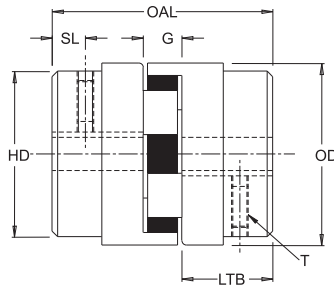
FLEXIBLE SHAFT COUPLINGS

FLEXIBLE JAW COUPLINGS - DIMENSIONAL DATA

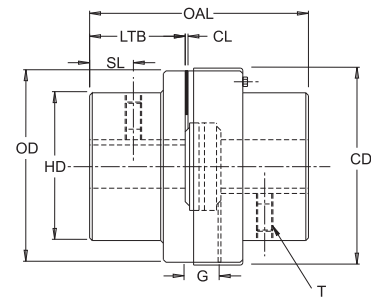
L TYPE STYLE 1



L TYPE STYLE 2



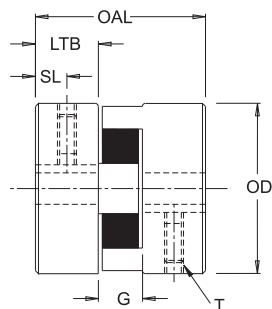
C TYPE STYLE 3



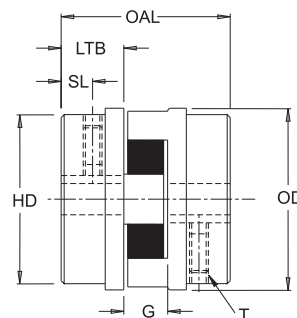
L Type, C Type and AL Type Flexible Couplings Dimensional Data (inches)

Part No.	Style Number	Bore		Outer Dia. OD	Overall Length OAL	Gap G	Length Thru Bore LTB	Hub Dia. HD	Clearance CL	Set Screw Location SL	Collar Dia. CD	Set Screw Size T	Weight (lbs)		Moment of Inert WR^2 in-lbs ² (solid)
		Min	Max										Solid	Max Bore	
L035	1	.12	.38	.62	.81	.27	.27	.62	-	.13	-	#6-32	.10	.10	0.003
L050	1	.25	.62	1.08	1.72	.48	.62	1.08	-	.31	-	1/4-20	.30	.20	0.054
L070	1	.25	.75	1.36	2.00	.50	.75	1.36	-	.38	-	1/4-20	.60	.40	0.115
L075	1	.25	.88	1.75	2.12	.50	.81	1.75	-	.31	-	1/4-20	1.00	.80	0.388
L090	1	.25	1.00	2.11	2.12	.50	.81	2.11	-	.44	-	1/4-20	1.50	1.20	0.772
L095	1	.44	1.12	2.11	2.50	.50	1.00	2.11	-	.44	-	5/16-18	1.80	1.30	0.890
L099	1	.44	1.19	2.54	2.87	.75	1.06	2.54	-	.44	-	5/16-18	2.50	2.00	2.048
L100	1	.44	1.38	2.54	3.50	.75	1.37	2.54	-	.44	-	5/16-18	3.50	2.50	2.783
L110	1	.62	1.62	3.31	4.25	.87	1.69	3.31	-	.75	-	3/8-16	6.60	5.00	8.993
L150	1	.62	1.88	3.75	4.50	1.00	1.75	3.75	-	.75	-	3/8-16	9.10	7.00	11.477
L190	2	.75	2.12	4.50	4.88	1.00	1.94	4.00	-	.88	-	1/2-13	17.00	13.00	39.256
L225	2	.75	2.62	5.00	5.38	1.00	2.19	4.25	-	1.00	-	1/2-13	23.00	18.00	65.000
L276	2	.88	2.88	6.18	7.87	1.63	3.12	5.00	-	1.56	-	1/2-13	47.00	36.00	188.000
C226	3	.88	2.50	5.15	7.00	1.50	2.75	4.12	.12	1.38	5.50	1/2-13	29.00	22.00	74.000
C276	3	.88	2.88	6.18	7.87	1.63	3.12	5.00	.12	1.56	6.53	1/2-13	47.00	36.00	188.000
C280	3	1.25	3.00	7.50	7.87	1.63	3.12	5.50	.12	1.56	7.81	1/2-13	61.00	49.00	362.000
C285	3	1.25	4.00	8.50	9.13	1.63	3.75	6.50	.12	1.75	8.88	5/8-11	87.00	68.00	642.000
C295	3	1.50	3.50	9.12	9.38	1.88	3.75	6.31	.12	1.88	9.62	5/8-11	97.00	78.00	862.000
C2955	3	1.75	4.00	9.12	10.38	1.88	4.25	7.12	.12	2.12	9.62	5/8-11	117.00	90.00	392.000
AL050	4	.25	.62	1.08	1.72	.48	.56	1.08	-	.31	-	1/4-20	.20	.20	0.020
AL070	4	.25	.75	1.36	2.00	.50	.75	1.36	-	.38	-	1/4-20	.30	.20	0.040
AL075	5	.25	.88	1.75	2.12	.50	.81	1.53	-	.31	-	1/4-20	.40	.30	0.121
AL090	5	.50	.88	2.12	2.34	.52	.91	1.53	-	.34	-	1/4-20	.50	.40	0.271
AL095	4	.50	1.12	2.12	2.50	.50	1.00	2.12	-	.44	-	5/16-18	.80	.60	0.336
AL099	5	.50	1.19	2.53	2.81	.75	1.03	2.06	-	.44	-	5/16-18	1.00	.80	0.644
AL100	5	.50	1.38	2.53	3.50	.75	1.37	2.41	-	.44	-	5/16-18	1.50	1.10	1.207
AL110	4	.62	1.62	3.31	4.25	.87	1.69	3.31	-	.75	-	5/16-18	2.70	2.10	3.531
AL150	5	.62	1.88	4.25	4.50	1.00	1.75	3.19	-	.63	-	5/16-18	3.70	2.80	7.002

Hubs are standard with one set screw. AL150 has 2 set screws provided.



AL TYPE STYLE 4



AL TYPE STYLE 5

Dimensions and specifications are subject to change without notice. Not all items are Made-To-Stock, contact us for availability.

02/14

Ph : 920-682-6877
Fx : 920-684-7210



sales@ldi-industries.com
www.ldi-industries.com

FLEXIBLE SHAFT COUPLINGS

FLEXIBLE JAW - SPLINED SHAFT INSTALLATION DATA

Installation Instructions for Fluid Power Applications

Spline bores furnished by LDI are provided with a special spline locking feature called Centaloc (see Figure 1)

Spline shafts: For optimum spline shaft life, LDI recommends full shaft engagement in the coupling hub (see Figure 2). Caution: If only partial spline shaft engagement is used, tightening of the special Centaloc spline locking feature set screw over the unused section of

the spline bore will result in damage to the hub. Before tightening the Centaloc set screws, check to see if the spline shaft is engaged under the set screws. Then tighten the Centaloc set screws to the recommended torque shown below. If only one of the two Centaloc set screws is used because of limited shaft engagement, please remove the unused set screw (see Figure 3).

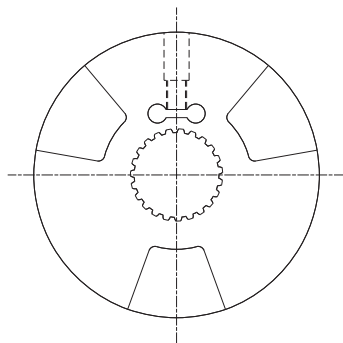


Figure 1
Spline Bore with Centaloc spline locking feature

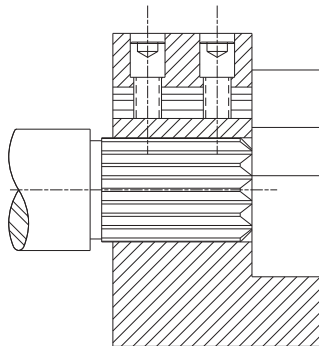


Figure 2
Recommended for spline engagement with Centaloc locking feature

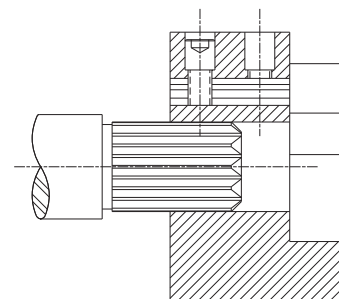


Figure 3
Remove second Centaloc set screw if not used

Flexible Couplings with splined shafts for Fluid Power Applications

Minimum Equipment Separation (inches)		
Coupling Size	G	Min-Shaft Separation [†]
L035	9/32	9/32
L050	15/32	1/8
L070	1/2	1/8
L075	1/2	1/8
L090	1/2	1/8
L095	1/2	1/8
L099	3/4	1/8
L100	3/4	1/8
L110	7/8	1/8
L150	1	1/8
L190	1	1/8
L225	1	1/8
L276	1 5/8	1/8
C226	1 1/2	1/8
C276	1 5/8	1/8
C280	1 5/8	1/8
C285	1 5/8	1/8

Spline Bore Centaloc Set Screw Torque		
Coupling Size	Set Screw Size UNC	Torque ft·lb
L090	5/16-18	13
L095	5/16-18	13
L099	5/16-18	13
L100	5/16-18	13
L110	3/8-16	23
L150	3/8-16	23
L190	5/8-11	100
L225	5/8-11	100
L276	*	*
C226	*	*
C280	*	*

* Consult Engineering. Items shipped are marked with appropriate torque values

Straight Bore & Keyway Set Screw Torque		
Coupling Size	Set Screw Size	Torque ft·lb
L035	6-32	10
L050-L090	1/4-20	80
L095-L100	5/16-18	160
L110-L150	3/8-16	275
L190-L276	1/2-13	600
C225	1/2-13	600
C280	1/2-13	600
C285	5/8-11	1200

Misalignment Data		
Type of Spider	Angular	Parallel
SOX (NBR)	1°	.015
Hytrell	1/2°	.015
Urethane	1°	.015

NOTE: [†] indicates that the min. shaft separation is based on Open Center or Snap Wrap Spiders or Style 3 couplings

Dimensions and specifications are subject to change without notice. Not all items are Made-To-Stock, contact us for availability.

02/14

Ph : 920-682-6877
Fx : 920-684-7210



sales@ldi-industries.com
www.ldi-industries.com