

# SELF FLARE TUBE FITTINGS

## BA55 SERIES

The BA55 Series reducer is a straight adapter consisting of a standpipe ready to be flared and a smaller BA Self Flare connection on the opposite end. The OD and wall thickness of the tube to be joined to each end of this adapter will determine the dash size and whether a BA or BAX version of this reducing adapter is required for the application.

### Standard Features:

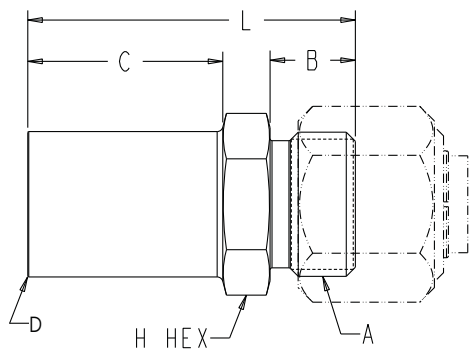
- Tube reductions beginning from -6 (.375 inch) to -32 (2.00 inch) diameter tube
- BAX55 adapters available for applications with heavy wall tubing
- Includes swivel tube nut and Self Flare sleeve

### Standard Materials:

- Steel construction
- Black oxide finish on fitting body and tube sleeve
- Zinc plated, steel swivel tube nut

### CAUTION

- System operating conditions and maximum pressures dictate tubing requirements. LDI Self Flare fittings require matching the tube connection on the adapter to the tube wall thickness selected for the application.
- Fully annealed and cleaned tubing is preferred. Consult factory for applications that require alloy tubing or tube wall thicknesses that exceed published limits for BA and BAX tube connections.



BA55 Series (inches)							
Part No.	Tube (D) Tube (A)		A	B	C	L	H
	OD	OD					
BA55-6-4	3/8	1/4	1/2-20	0.38	0.88	1.50	1/2
BA55-8-4	1/2	1/4	1/2-20	0.38	0.88	1.50	9/16
BA55-8-6	1/2	3/8	5/8-18	0.41	0.88	1.53	5/8
BA55-10-6	5/8	3/8	5/8-18	0.41	1.00	1.66	11/16
BA55-10-8	5/8	1/2	3/4-16	0.44	1.00	1.69	3/4
BA55-12-4	3/4	1/4	1/2-20	0.38	1.00	1.63	13/16
BA55-12-6	3/4	3/8	5/8-18	0.41	1.00	1.66	13/16
BA55-12-8	3/4	1/2	3/4-16	0.44	1.00	1.69	13/16
BA55-12-10	3/4	5/8	7/8-16	0.44	1.00	1.69	7/8
BA55-14-8	7/8	1/2	3/4-16	0.44	1.00	1.69	15/16
BA55-14-10	7/8	5/8	7/8-16	0.44	1.00	1.69	15/16
BA55-16-8	1	1/2	3/4-16	0.44	1.13	1.88	1 1/8
BA55-16-10	1	5/8	7/8-16	0.44	1.13	1.88	1 1/8
BA55-16-12	1	3/4	1 1/16-16	0.44	1.13	1.88	1 1/8
BA55-20-12	1 1/4	3/4	1 1/16-16	0.44	1.13	1.91	1 3/8
BA55-24-12	1 1/2	3/4	1 1/16-16	0.44	1.31	2.13	1 5/8
BA55-24-16	1 1/2	1	1 5/16-16	0.50	1.31	2.19	1 5/8
BA55-24-20	1 1/2	1 1/4	1 5/8-16	0.69	1.31	2.38	1 5/8
BA55-32-14	2	7/8	1 3/16-16	0.44	1.50	2.44	2 1/8
BA55-32-16	2	1	1 5/16-16	0.50	1.50	2.50	2 1/8
BA55-32-20	2	1 1/4	1 5/8-16	0.69	1.50	2.69	2 1/8
BA55-32-24	2	1 1/2	1 15/16-16	0.69	1.50	2.69	2 1/8

Dimensions and specifications are subject to change without notice. Not all items are Made-To-Stock, contact us for availability.

02/14

Ph : 920-682-6877  
Fx : 920-684-7210



sales@ldi-industries.com  
www.ldi-industries.com