

# SELF FLARE TUBE FITTINGS

## COLLARS & RAM DIES

Collars and Ram Dies are accessories to the Hydraulic Preset Tool and are required to successfully flare tube ends using this tool. Collars are selected based on only the OD of the tube to be flared and are specified by dash size corresponding to that OD. Ram Dies are selected based on both the OD and wall thickness of the tube to be flared. To define a Ram Die, specify the dash size corresponding to the tube OD and either a BA or BAX version of the die dictated by the wall thickness of the tube.

### Standard Features:

- Ram dies and collars available for tube sizes from -2 (.125 inch) to -32 (2.00 inch)
- Collars
  - Each collar is designed specific to the tube OD and is independent of the wall thickness of the tube being flared
- Ram Dies
  - Each ram die is specific to the tube OD and a range of tube wall thickness
  - BAXRD ram dies are available for applications with heavy wall tubing

### Standard Materials:

- Steel construction
- Black oxide finish

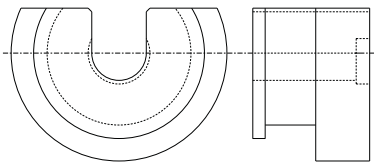
### CAUTION

- System operating conditions and maximum pressures dictate tubing requirements. LDI Self Flare fittings require matching the tube connection on the adapter to the tube wall thickness selected for the application.
- Fully annealed and cleaned tubing is preferred. Consult factory for applications that require alloy tubing or tube wall thicknesses that exceed published limits for BA and BAX tube connections.

### NOTE

- Hydraulic Preset Tool sold separately

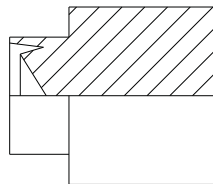
## COLLARS (SAME COLLARS FOR BA & BAX)



Collars (inches)	
Part No.	Tube OD
P10MC-4	1/4
P10MC-6	3/8
P10MC-8	1/2
P10MC-10	5/8
P10MC-12	3/4
P10MC-14	7/8
P10MC-16	1
P10MC-20	1 1/4
P10MC-24	1 1/2

## STANDARD WEDGE (USE PREFIX BA)

Standard Wedge (inches)				
Part No. for BA Tubing	Size	Tube OD	Min.	Max.
BARD-4	4	1/4	.010	.035
BARD-5	5	5/16	.020	.035
BARD-6	6	3/8	.020	.035
BARD-8	8	1/2	.020	.049
BARD-10	10	5/8	.028	.058
BARD-12	12	3/4	.028	.065
BARD-14	14	7/8	.035	.083
BARD-16	16	1	.028	.083
BARD-20	20	1 1/4	.065	.083
BARD-24	24	1 1/2	.065	.095
BARD-32	32	2	.065	.095



## HEAVY WEDGE (USE PREFIX BAX)

Heavy Wedge (inches)				
Part No. for BAX Tubing	Size	Tube OD	Min.	Max.
BAXRD-4	4	1/4	.022	.049
BAXRD-5	5	5/16	.028	.049
BAXRD-6	6	3/8	.035	.065
BAXRD-8	8	1/2	.042	.083
BAXRD-10	10	5/8	.049	.083
BAXRD-12	12	3/4	.058	.095
BAXRD-14	14	7/8	.065	.095
BAXRD-16	16	1	.083	.095
BAXRD-20	20	1 1/4	.083	.120
BAXRD-24	24	1 1/2	.095	.120
BAXRD-32	32	2	.095	.120

Dimensions and specifications are subject to change without notice. Not all items are Made-To-Stock, contact us for availability.

02/14

Ph : 920-682-6877  
Fx : 920-684-7210



sales@ldi-industries.com  
www.ldi-industries.com